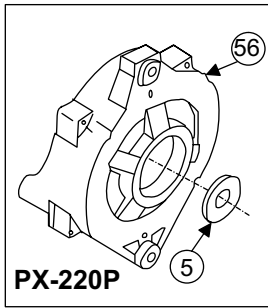
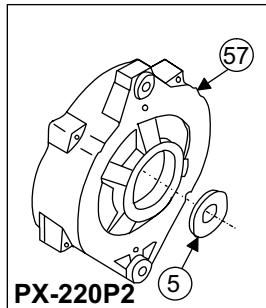


## TABLE OF CONTENTS

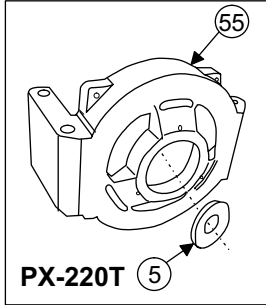
Table of Contents.....	1
PX-220 Parts Diagram, Early (serial numbers from 9963776 to 10977309).....	2
PX-2 Series Parts List, Early (9963776 to 10977309).....	3
PX-220 Parts Diagram, Middle (serial numbers 10977310 to 79916154).....	4
PX-2 Series Parts List, Middle (10977310 to 79916154).....	5
PX-220 Parts Diagram, Late (79916155 to present).....	6
PX-2 Series Parts List, Late (79916155 to present).....	7
PX-320S Parts Diagram, Early (395029 to 100235241).....	8
PX-3 Series Parts List, Early (395029 to 100235241).....	9
PX-320S Parts Diagram, Late (100235242 to present).....	10
PX-3 Series Parts List, Late (100235242 to present).....	11
PX-4CS Parts Diagram (10964126 to present).....	12
PX-4CS Series Parts List (10964126 to present).....	13
PX-420G Parts Diagram (10964126 to 49914735).....	14
PX-4G Series Parts List (10964126 to 49914735).....	15
PX-420G-5 Parts Diagram (49914736 to present).....	16
PX-4G-5 Series Parts List (49914736 to present).....	17
PX-4S Parts Diagram (695502 to present).....	18
PX-4S Parts List (695502 to present).....	19
PX-520 Parts Diagram, Early (6976693 to 79916154).....	20
PX-5 Series Parts List, Early (6976693 to 79916154).....	21
PX-520 Parts Diagram, Late (79916155 to present).....	22
PX-5 Series Parts List, Late (79916155 to present).....	23
PX-614, PX-616, PX-619 24 Volt Parts Diagram .....	24
PX-614, PX-616, PX-619 24 Volt Parts List .....	25
PX-622 Series Parts Diagram (not including PX-622Q).....	26
PX-622 Series Parts List (not including PX-622Q).....	27
PX-622Q Series Parts Diagram.....	28
PX-622Q Series Parts List.....	29
PX-627 Series Parts Diagram, Early (up to 100235241)(not including PX-627Q).....	30
PX-627 Series Parts List, Early (up to 100235241)(not including PX-627Q).....	31
PX-627 Series Parts Diagram, Late (100235242 to present)(not inc. PX-627Q).....	32
PX-627 Series Parts List, Late (100235242 to present)(not including PX-627Q).....	33
PX-627Q Series Parts Diagram.....	34
PX-627Q Series Parts List.....	35
PX-635 Series Parts Diagram (not including PX-635Q).....	36
PX-635 Series Parts List (not including PX-635Q).....	37
PX-635Q Series Parts Diagram.....	38
PX-635Q Series Parts List.....	39
Front Housings, Page One (Photos).....	40
Front Housings, Page Two (Photos).....	41
Rear Housings (Photos).....	42
Rotors (Photos).....	43
Stators, Page One (Photos).....	44
Stators, Page Two (Photos) .....	45
Fans (Photos).....	46
Bearings (Photos).....	47
Heat Sinks (Photos).....	48
Pulleys (Photos).....	49
Bracket Kits (Photos).....	50
Brush Assemblies (Photos).....	51
Alternator Info Page.....	52
Obsolete and Discontinued Parts Information.....	53



PX-220P

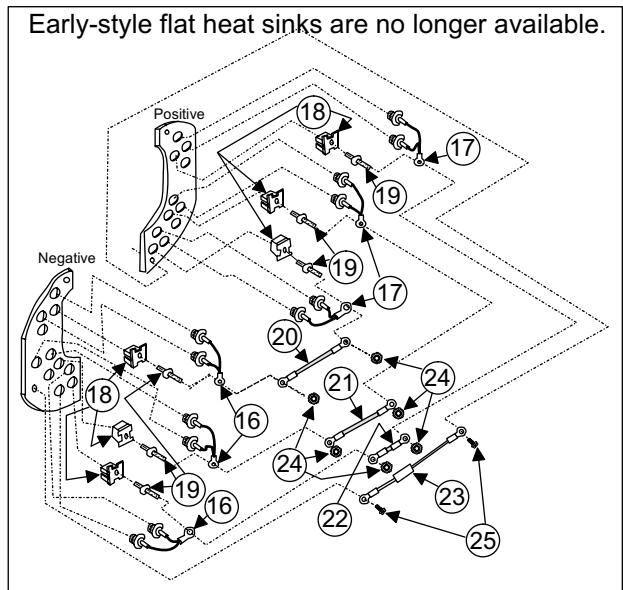


PX-220P2



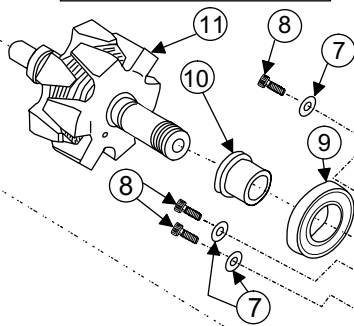
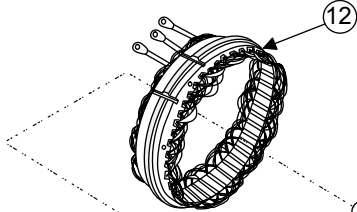
PX-220T

Stators for early flat heat sinks still available. Make sure part # ends with "L" for "Long Stator Lead". If using late-style heat sinks, Part # should not have "L".



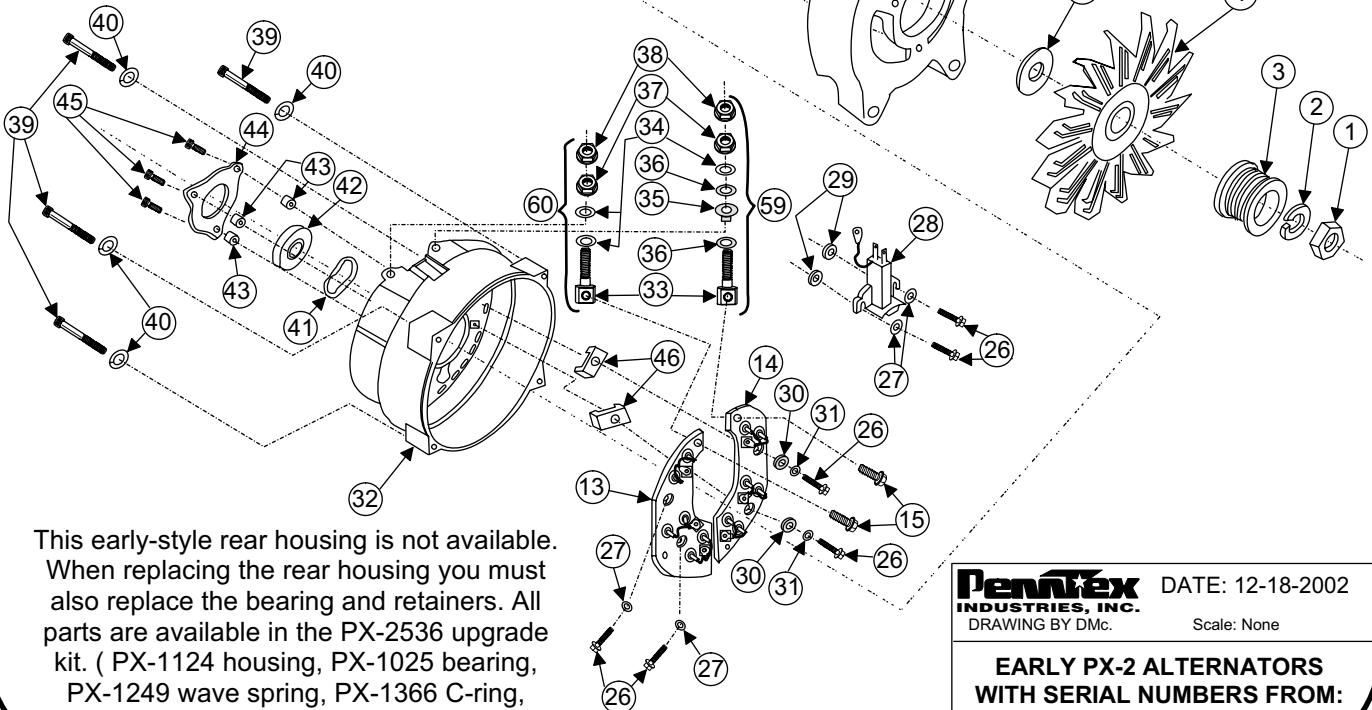
Early-style flat heat sinks are no longer available.

When going from flat to finned diode heat sinks, Heat Sink Strap Upgrade Kit PX-2526 is needed. It includes 3 flat straps, one capacitor, and two capacitor attaching screws.



PX-220R

**NOTE:** Some of these parts are no longer available, but in some cases, later model parts can be substituted. Call the PennTex Factory at 877-590-7366 for information on these parts.



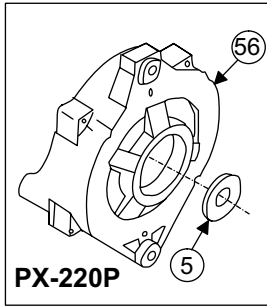
This early-style rear housing is not available. When replacing the rear housing you must also replace the bearing and retainers. All parts are available in the PX-2536 upgrade kit. ( PX-1124 housing, PX-1025 bearing, PX-1249 wave spring, PX-1366 C-ring, 2- PX-1294 thru-bolts & PX-2534 brg. tool).

**PENNTEX INDUSTRIES, INC.**  
**PARTS LIST**  
**EARLY PX-2 SERIES**

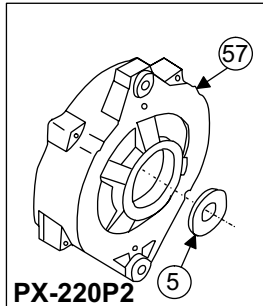


No.	Part #	Description	Qty.
1	PX-1060	Rotor nut	1
2	PX-1059	Rotor lock washer	1
3A	PX-1129	K6 2.3" pulley PX-2P, PX-2P2	1
3B	PX-1130	K8 2.3" pulley PX-2R, PX-2T	1
3C	*	K6 pulley PX-2RL	1
3D	PX-1155	K7 2.35" pulley PX-2P2 MoPar	1
4	PX-1057	Fan	1
5	PX-1058	Fan spacer PX-2P, 2P2, 2T	1
6	PX-1246	Front housing "R"	1
7	*	Frt. brg. retainer	3
8	*	Retainer screw	3
9	*	Frt. bearing	1
10	*	Rotor bushing: .878" long	1
11	*	Rotor	1
12	PX-2503-1L	Stator - 170/200 amp	1
13	*	Neg. heat sink assembly	1
14	*	Pos. heat sink assembly	1
15	PX-1102	Battery post bolt	2
16	PX-2513	Negative diode assembly	3
17	PX-2512	Positive diode assembly	3
18	PX-1039	Pos. & neg. stud insulator	6
19	PX-1040	Heat sink stud	6
20	*	Rectifier strap - large	1
21	*	Rectifier strap - medium	1
22	*	Rectifier strap - small	1
	PX-2526	Heat sink strap upgrade kit***	1
23	PX-4511	Capacitor assembly	1
24	PX-1099	8-32 keps nut	6
25	PX-1096	Capacitor screw, 8-32 x 3/8" hex	2
26	PX-1097	Heat sink screw, 8-32 x 3/4" hex	6
27	PX-1098	#8 Flat washer	4
28	PX-2506	Brush holder assembly	1
29	PX-1148	Brush holder spacer	2
30	PX-1049	Heat sink insulator	2
31	PX-1108	M4 flat washer (smaller than # 27)	2
32	*	Rear housing	1
	PX-2536	***Rear housing upgrade kit	1
33	PX-1066	Battery post	2
34	PX-1116	5/16" Flat washer	3

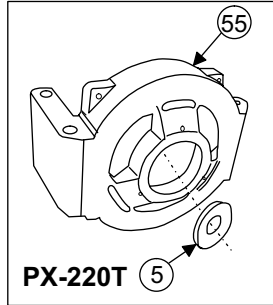
No.	Part #	Description	Qty.
35	PX-1070	Battery post insulator	1
36	PX-1071	Bat. post insulator washer	2
37	PX-1105	5/16" Flange nut	2
38	PX-1106	5/16" Steel locknut	2
39	PX-1107	Thru bolt SHCS 1/4-20x2"	4
40	PX-1104	Thru bolt lock washer	4
41	PX-1249	Wave spring	1
42	*	Rear bearing	1
43	**	Bearing retainer spacers	3
44	**	Rear brg. retainer	1
45	**	Brg. retainer screw	3
46	PX-1072	Pos. heat sink insulator	2
47	**	Wave spring spacer	1
54	PX-1273	PX-2R fan spacer	1
55	PX-1122	2T front housing	1
56	PX-1051	2P front housing	1
57	PX-1123	2P2 front housing	1
59	PX-2520	Positive post assembly	1
60	PX-2521	Negative post assy.	1
	PX-1258	PX-2R rear support brkt.***	1
	PX-1335	PX-2RL rear support brkt.***	1
<p><b>*Not available but upgraded. Call factory for replacement parts information.</b></p> <p><b>**Part not available.</b></p> <p><b>***Not shown in drawing</b></p>			
		PennTex 08-04-2003	



PX-220P

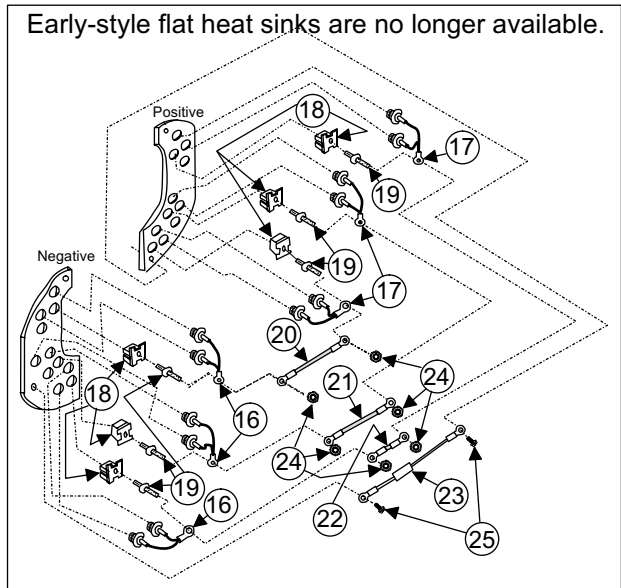


PX-220P2

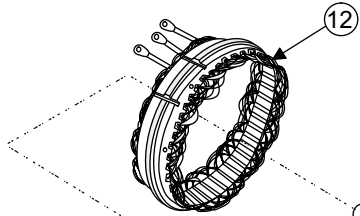


PX-220T

Stators for early flat heat sinks still available. Make sure part # ends with "L" for "Long Stator Lead". If using late-style heat sinks, Part # should not have "L".



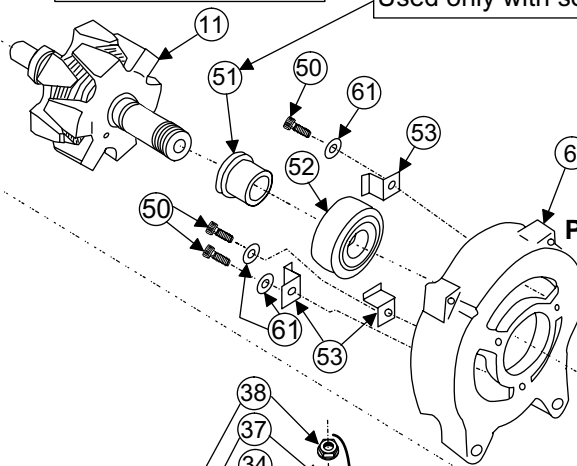
Early-style flat heat sinks are no longer available.



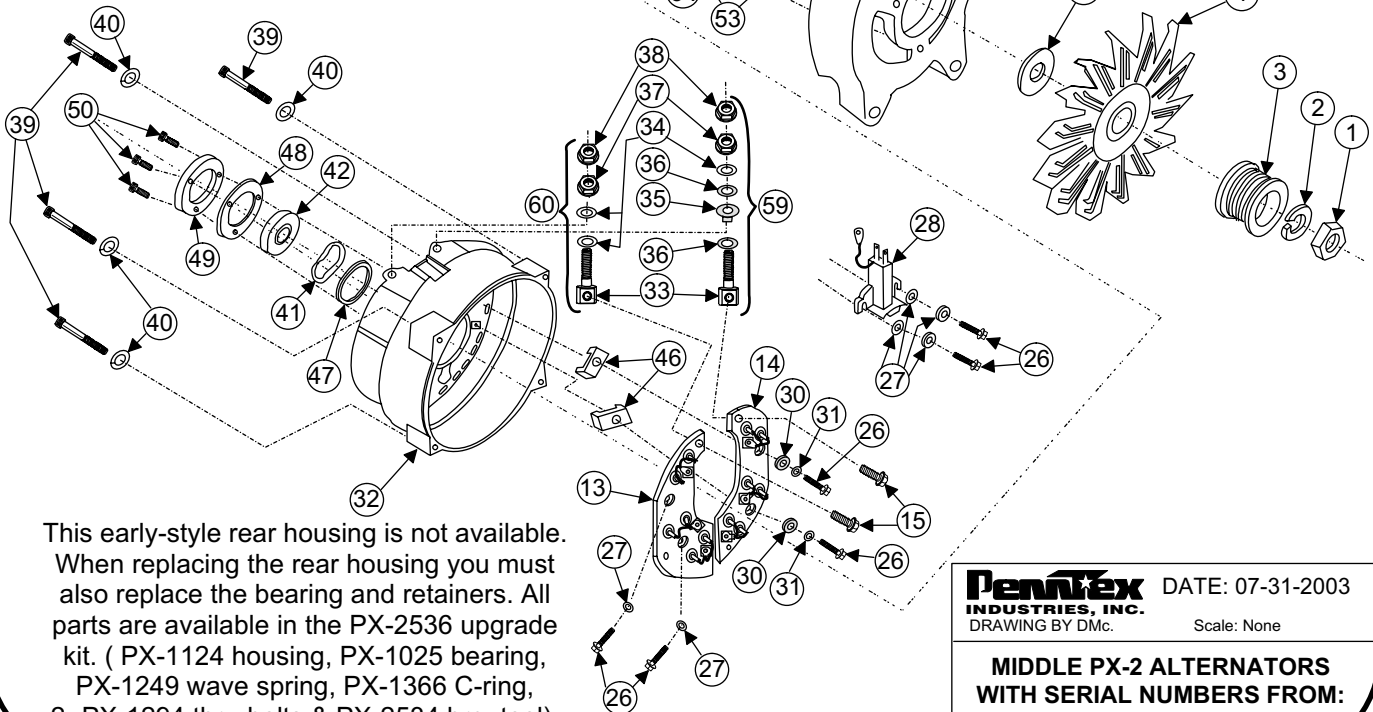
Used only with serial # 10977310 to 1988080

When going from flat to finned diode heat sinks, Heat Sink Strap Upgrade Kit PX-2526 is needed. It includes 3 flat straps, one capacitor, and two capacitor attaching screws.

**NOTE:** Some of these parts are no longer available, but in some cases, later model parts can be substituted. Call the PennTex Factory at 877-590-7366 for information on these parts.



PX-220R



This early-style rear housing is not available. When replacing the rear housing you must also replace the bearing and retainers. All parts are available in the PX-2536 upgrade kit. ( PX-1124 housing, PX-1025 bearing, PX-1249 wave spring, PX-1366 C-ring, 2- PX-1294 thru-bolts & PX-2534 brg. tool).

**PennTex** INDUSTRIES, INC. DATE: 07-31-2003  
DRAWING BY DMc. Scale: None

MIDDLE PX-2 ALTERNATORS  
WITH SERIAL NUMBERS FROM:  
10977310 TO 79916154

SERIAL #'s

FROM: 10977310 to 79916154

**PENNTEX INDUSTRIES, INC.**

**PARTS LIST  
MIDDLE PX-2 SERIES**



No.	Part #	Description	Qty.
1	PX-1060	Rotor nut	1
2	PX-1059	Rotor lock washer	1
3A	PX-1129	K6 pulley PX-2P, PX-2P2	1
3B	PX-1130	K8 pulley PX-2R, PX-2T	1
3C	*	K6 pulley PX-2RL	1
3D	PX-1155	K7 pulley PX-2P2 Dodge	1
4	PX-1057	Fan	1
5	PX-1058	Fan spacer PX-2P, 2P2, 2T	1
6	PX-1246	Front housing "R"	1
11	*	Rotor	1
12	PX-2503-1L	Stator - 170/200 amp (Long)	1
13	*	Neg. heat sink assembly	1
14	*	Pos. heat sink assembly	1
15	PX-1102	Battery post bolt	2
16	PX-2513	Negative diode assembly	3
17	PX-2512	Positive diode assembly	3
18	PX-1039	Pos. & neg. stud insulator	6
19	PX-1040	Heat sink stud	6
20	*	Rectifier strap - large	1
21	*	Rectifier strap - medium	1
22	*	Rectifier strap - small	1
	PX-2526	Heat sink strap upgrade kit***	1
23	PX-4511	Capacitor assembly	1
24	PX-1099	8-32 keps nut	6
25	PX-1096	Capacitor screw, 8-32 x 3/8" hex	2
26	PX-1097	Heat sink screw, 8-32 x 3/4" hex	6
27	PX-1098	#8 Flat washer	4
28	PX-2506	Brush holder assembly	1
30	PX-1049	Heat sink insulator	2
31	PX-1108	M4 flat washer (smaller than # 27)	2
32	*	Rear housing	1
	PX-2536	***Rear housing upgrade kit	1
33	PX-1066	Battery post	2
34	PX-1116	5/16" Flat washer	3
35	PX-1070	Battery post insulator	1
36	PX-1071	Bat. post insulator washer	2
37	PX-1105	5/16" Flange nut	2
38	PX-1106	5/16" Steel locknut	2
39	PX-1107	Thru bolt SHCS, 1/4-20 x 2"	4

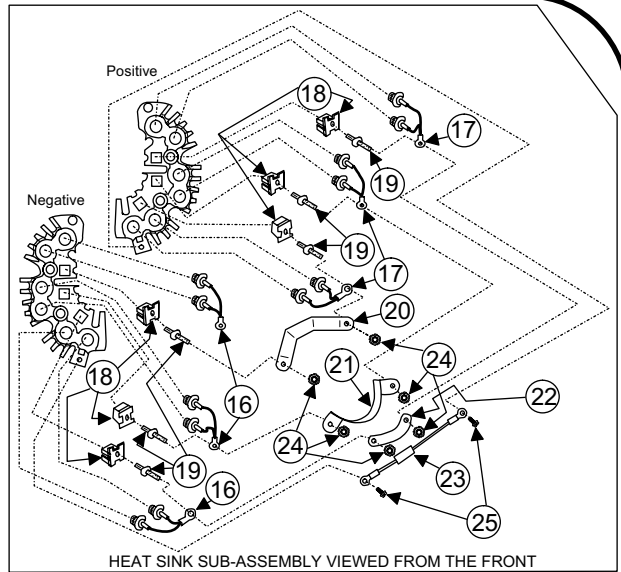
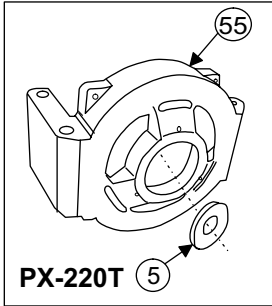
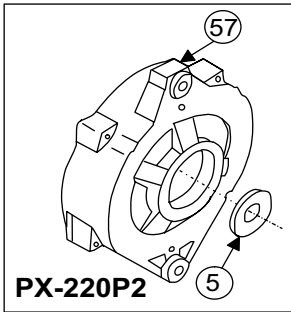
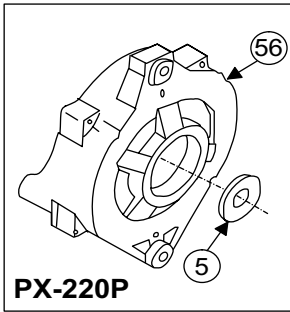
No.	Part #	Description	Qty.
40	PX-1104	Thru bolt lock washer	4
41	PX-1249	Wave spring	1
42	PX-1025	Rear bearing	1
46	PX-1072	Pos. heat sink insulator	2
47	**	Wave spring spacer	1
48	**	Brg. retainer cap spacer	1
49	**	Brg. retainer cap	1
50	PX-1305	Frnt. brg. retainer screw	3
51	**	Rotor bushing: 1.060" long	1
52	PX-1074	Front bearing	1
53	PX-1312	Z-clip front bearing retainer	3
54	PX-1273	PX-2R fan spacer	1
55	PX-1122	2T front housing	1
56	PX-1051	2P front housing	1
57	PX-1123	2P2 front housing	1
59	PX-2520	Positive post assembly	1
60	PX-2521	Neg. post assembly	1
61	PX-1100	#10 Lock washer	3
	PX-1258	PX-2R rear support brkt.***	1
	PX-1335	PX-2RL rear support brkt.***	1

**\*Not available but upgraded. Call factory for replacement parts information.**

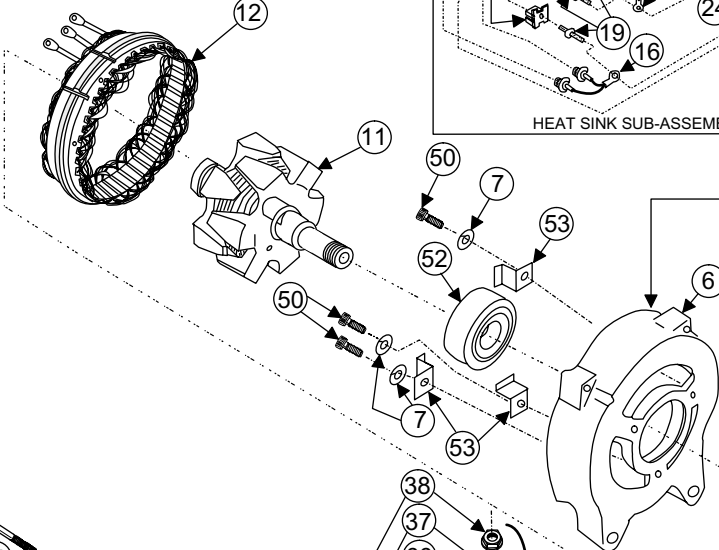
**\*\*Part not available.**

**\*\*\*Not shown in drawing**

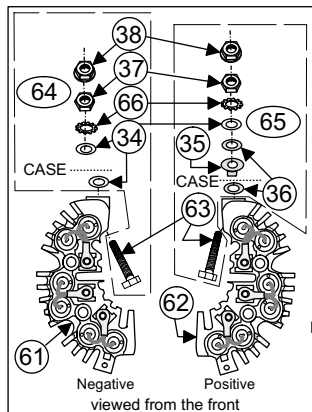
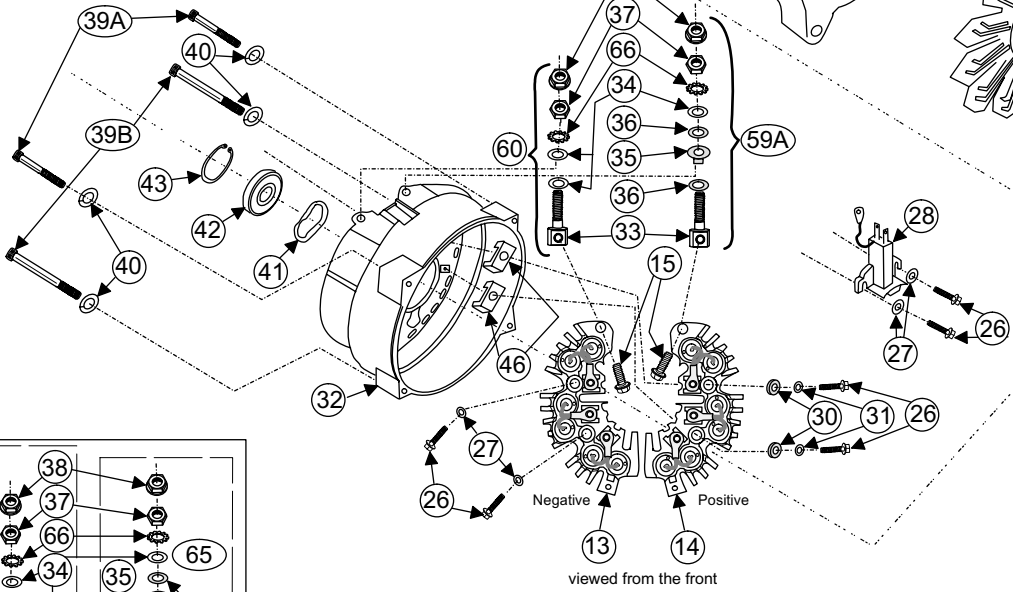
PennTex 10-23-2003



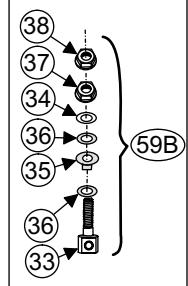
NOTE: In late 2001 beginning with S# 100129598, either a K6 or K8 pulley was used on PX-2R alternators depending on application.



PX-220R



NUMBER 61 AND 62 ILLUSTRATE THE NEW-STYLE HEAT SINKS USED BY PENNTEX STARTING AT ALTERNATOR SERIAL NUMBER 80340165. NUMBER 64 IS WHAT IS INCLUDED IN A PX-2543 KIT FOR THE NEGATIVE HEAT SINK POST KIT. NUMBER 65 IS WHAT IS INCLUDED IN THE PX-2542 KIT FOR THE POSITIVE HEAT SINK POST KIT.



**PennTex** INDUSTRIES, INC. DATE: 07-14-2003  
DRAWING BY Dmc. Scale: None

**LATE PX-2 ALTERNATORS WITH SERIAL NUMBERS FROM: 79916155 TO PRESENT**

SERIAL #'s

FROM: 79916155

to Present

**PENNTEx INDUSTRIES, INC.**

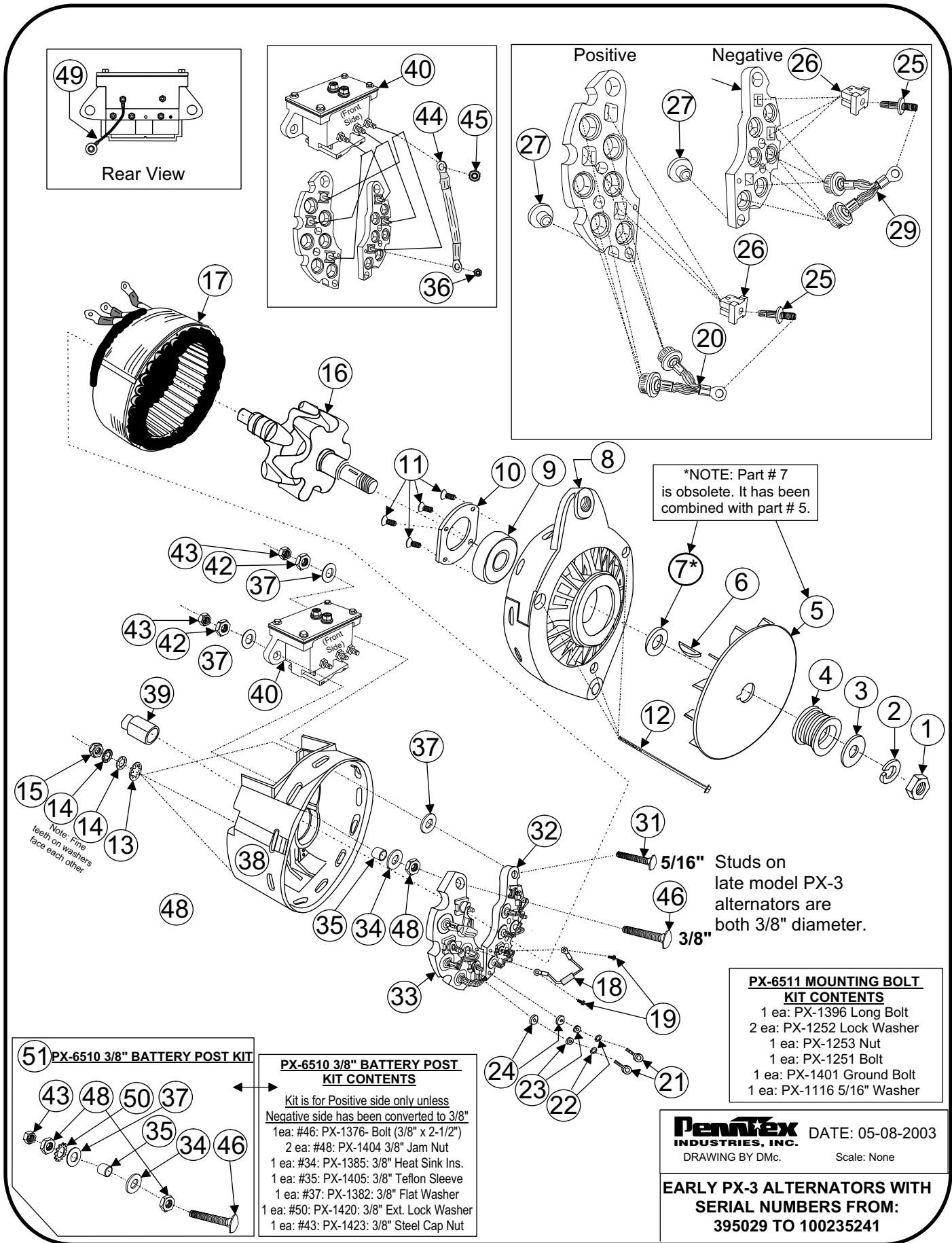
**PARTS LIST**

**LATE PX-2 SERIES**



No.	Part #	Description	Qty.
1	PX-1060	Rotor nut	1
2	PX-1059	Rotor lock washer	1
3	PX-1129	K6 pulley PX-2P, PX-2P2	1
3A	PX-1129	K6 pulley PX-2R (Late 2001 & up)	1
3B	PX-1130	K8 pulley PX-2R (Prior to K6 in 2001)	1
3C	PX-1130	K8 pulley PX-2T	1
3D	PX-1155	K7 pulley PX-2P2 Dodge	1
4	PX-1057	Fan	1
5	PX-1058	Fan spacer PX-2P, 2P2, 2T	1
6A	PX-1246	Front housing "R"/ 2R-5T	1
6B	PX-1411	Front housing 2R-5A	1
7	PX-1000	Retainer screw lockwasher	3
11	PX-1055	Rotor	1
12A	PX-2503-1	Stator- 200 amp	1
12C	PX-2503-3	Stator- 200 Ext. Rectified	1
12D	PX-2503-5	Stator- 200 for -5 alt.	1
13	PX-2505	Negative heat sink assembly	1
14	PX-2504	Positive heat sink assembly	1
15	PX-1102	Battery post bolt	2
16	PX-2513	Negative diode assembly	3
17	PX-2512	Positive diode assembly	3
18	PX-1039	Pos. & neg. stud insulator	6
19	PX-1040	Heat sink stud	6
20	PX-1350	Rectifier strap - large	1
21	PX-1351	Rectifier strap - medium	1
22	PX-1352	Rectifier strap - small	1
23	PX-4511	Capacitor assembly	1
24	PX-1099	8-32 keps nut	6
25	PX-1096	Capacitor screw, 8-32 x 3/8" hex	2
26	PX-1097	Heat sink screw, 8-32 x 3/4" hex	6
27	PX-1098	#8 Flat washer	4
28	PX-2506	Brush holder assembly	1
30	PX-1049	Heat sink insulator	2
31	PX-1108	M4 flat washer (smaller than # 27)	2
32A	PX-1124	Rear housing	1
32B	PX-1124-T	Rear housing, 2R-5T, 2RL-5	1
33	PX-1066	Battery post	2
34	PX-1116	5/16" Flat washer	3

No.	Part #	Description	Qty.
35	PX-1070	Bat. post insulator (white)	1
36	PX-1071	Bat. post insulator washer (red)	2
37	PX-1515	5/16" Heavy jam nut	2
38	PX-1106	Steel locknut	2
39A	PX-1107	Thru bolt 1/4-20 x 2"	2
39B	PX-1294	Thru bolt 1/4-20 x 3"	2
40	PX-1104	Thru bolt lock washer	4
41	PX-1249	Wave spring	1
42	PX-1025	Rear bearing	1
43	PX-1366	Rear brg. C-ring	1
46	PX-1072	Pos. heat sink insulator	2
50	PX-1305	Retainer screw	3
52	PX-1074	Front bearing	1
53	PX-1312	Z clip	3
54	PX-1273	PX-2R fan spacer	1
55	PX-1122	2T front housing	1
56	PX-1051	2P front housing	1
57	PX-1123	2P2 front housing	1
59	PX-2520	Positive post assy.	1
60	PX-2521	Negative post assy.	1
61	PX-2541	Neg. heat sink after S# 80340165	1
62	PX-2540	Pos. heat sink after S# 80340165	1
63	PX-2539	5/16" x 1-3/4" post	2
64	PX-2543	Neg. post assy. after S# 80340165	1
65	PX-2542	Pos. post assy. after S# 80340165	1
66	PX-1516	5/16" Ext. tooth lock washer	2
	PX-1258	***PX-2R rear support brkt.	1
	PX-1335	***PX-2RL rear support brkt.	1
<b>***Not shown on drawing</b>			
PennTex 07-17-2003			





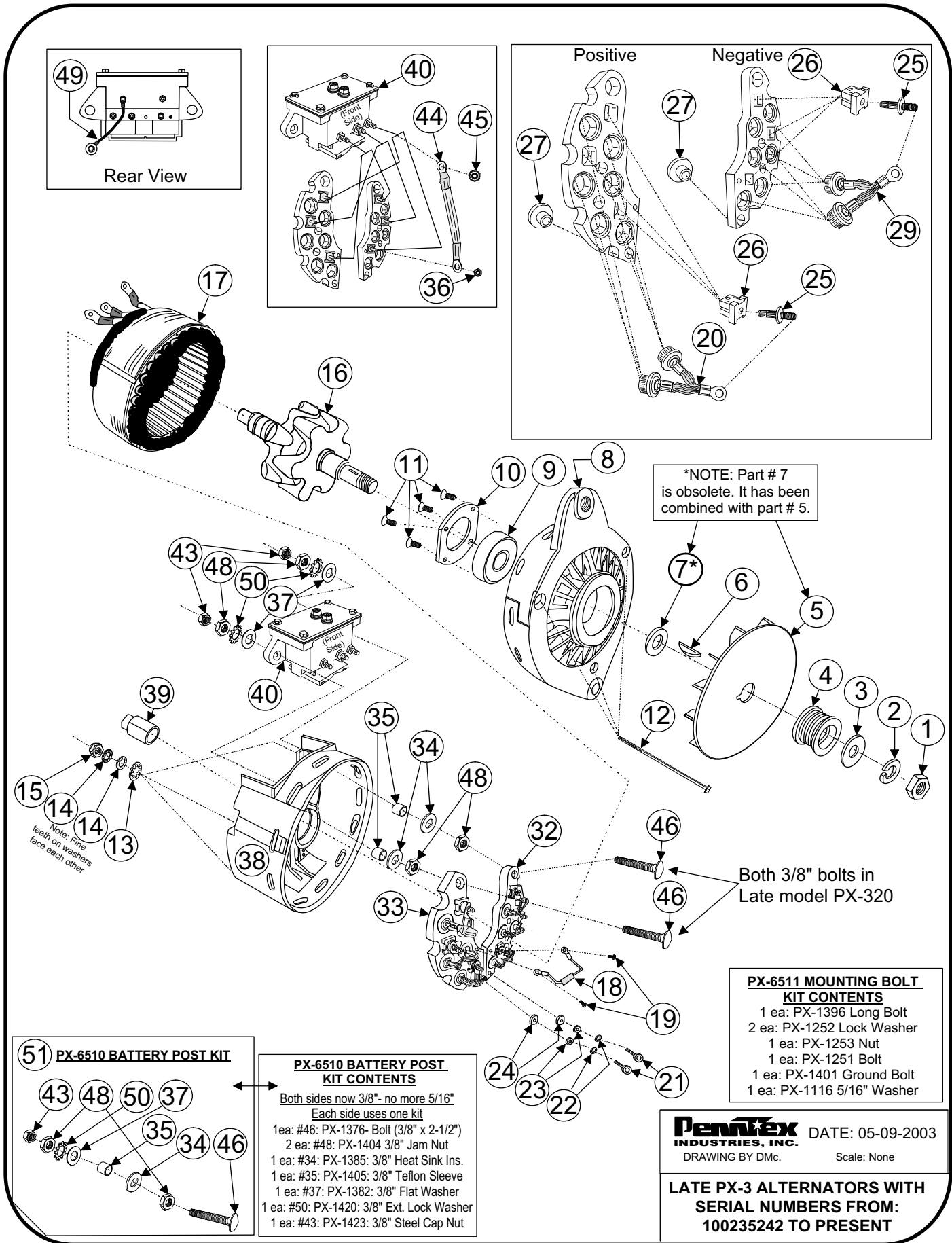
SERIAL #'s  
FROM: 395029  
to 100235241

**PENNTEx INDUSTRIES, INC.**  
**PARTS LIST**  
**EARLY PX-3 SERIES**

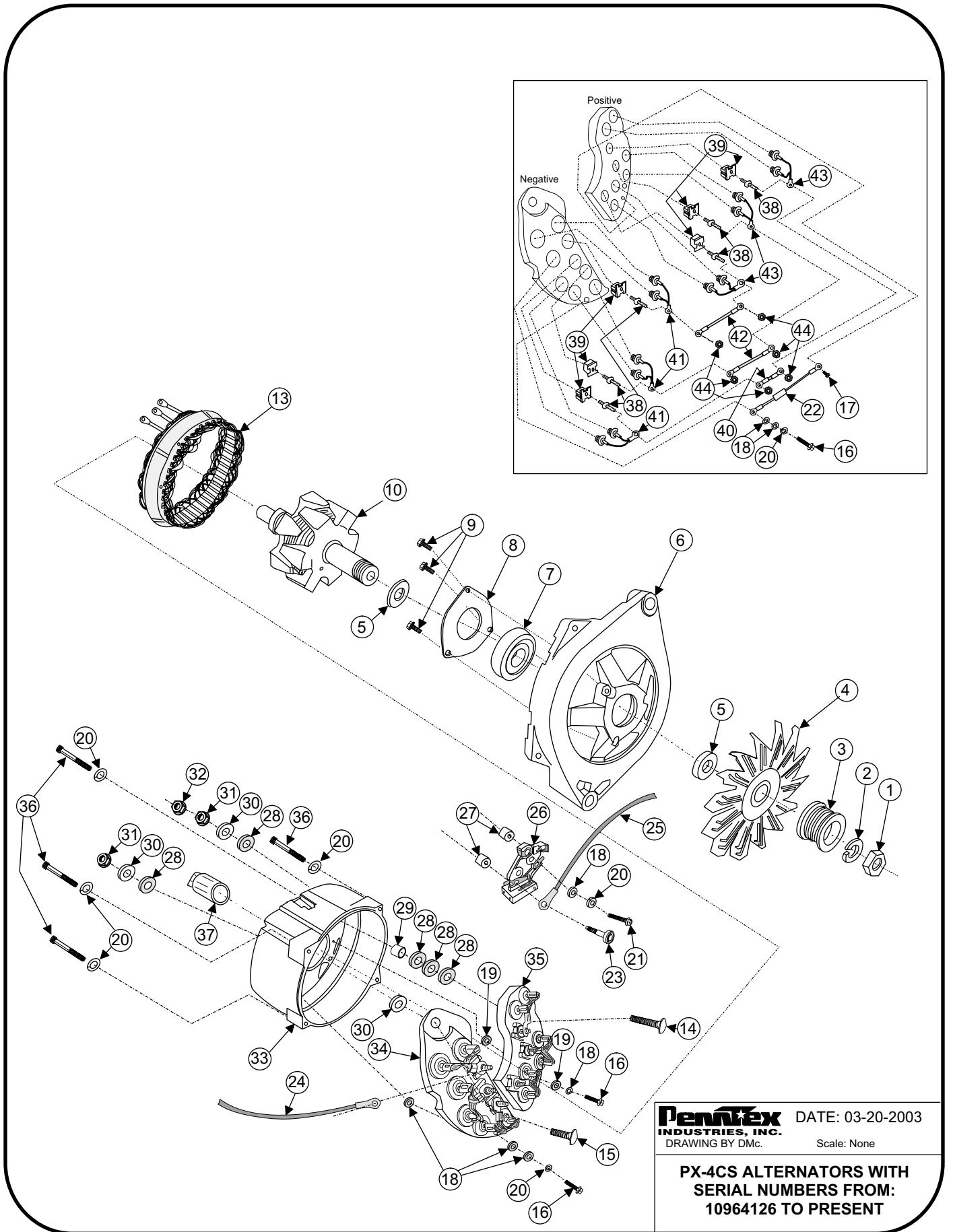


No.	Part #	Description	Qty.
1	PX-1083	Rotor nut	1
2	PX-1059	Rotor lock washer	1
3	PX-1058	Rotor washer	1
4	PX-1355	2.5 inch diameter K8 pulley	1
5	PX-1409	Fan	1
6	PX-1080	Woodruff key	1
7	*	Fan spacer (now part of #5)	1
8	PX-1073	Front housing	1
9	PX-1074	Front bearing	1
10	PX-1075	Front bearing retainer	1
11	PX-1301	Fr. brg. retainer screw	4
12	PX-1092	Thru bolts	3
13	PX-1101	#10 Internal lock washer	3
14	PX-1269	Nord lock washer	6
15	PX-1213	#10 nylon lock nut	3
16	PX-1077	Rotor	1
17	PX-3503-1	Stator- 200 amp.	1
18	PX-3514	Capacitor assembly	1
19	PX-1096	Capacitor screw- 8-32 x 3/8" hex	1
20	PX-2512	Positive diode assembly	3
21	PX-1114	Heat sink bolt- 10-32 x 1" soc. hd.	2
22	PX-1100	#10 lock washer	2
23	PX-1111	#10 flat washer	2
24	PX-1091	Heat sink insulator (top)	2
25	PX-1040	Heat sink stud	6
26	PX-1039	Heat sink stud insulator	6
27	PX-1090	Heat sink insulator (bottom)	2
29	PX-2513	Negative diode assembly	3
31	PX-1118	5/16" Negative battery post	1
32	PX-3505	Negative heat sink assembly	1
33	PX-3504	Positive heat sink assembly	1
34	PX-1385	Nylon insulator washer, 3/8"	2
35	PX-1405	Teflon bat. post sleeve, 3/8"	2
36	PX-1099	8-32 keps nut	6
37	PX-1116	5/16" flat washer	3
38	PX-1375	Rear hsg. (Specify post sizes: 3/8-5/16")	1
39	PX-1081	Rear bearing	1
40	PX-3506	Brush hldr assy. w/ brushes	1
	PX-1069	Brushes***	2

No.	Part #	Description	Qty.
42	PX-105	5/16" Flange nut	2
43	PX-1106	Steel cap nut, 5/16"	2
44	PX-3510	Rectifier strap	6
45	PX-1113	10-32 keps nut	6
46	PX-1376	3/8" x 2-1/2" Pos. bat. post	2
48	PX-1404	3/8" jam nut	4
49	PX-3509	Brush ground lead	1
50	PX-1420	3/8" external lock washer	2
51	PX-6510	3/8" Battery post kit	1
	PX-6511	Mounting bolt kit***	1
<p><b>*Not available but upgraded. Call factory for replacement parts information.</b></p> <p><b>***Not shown on drawing.</b></p>			
PennTex 05-08-2003			







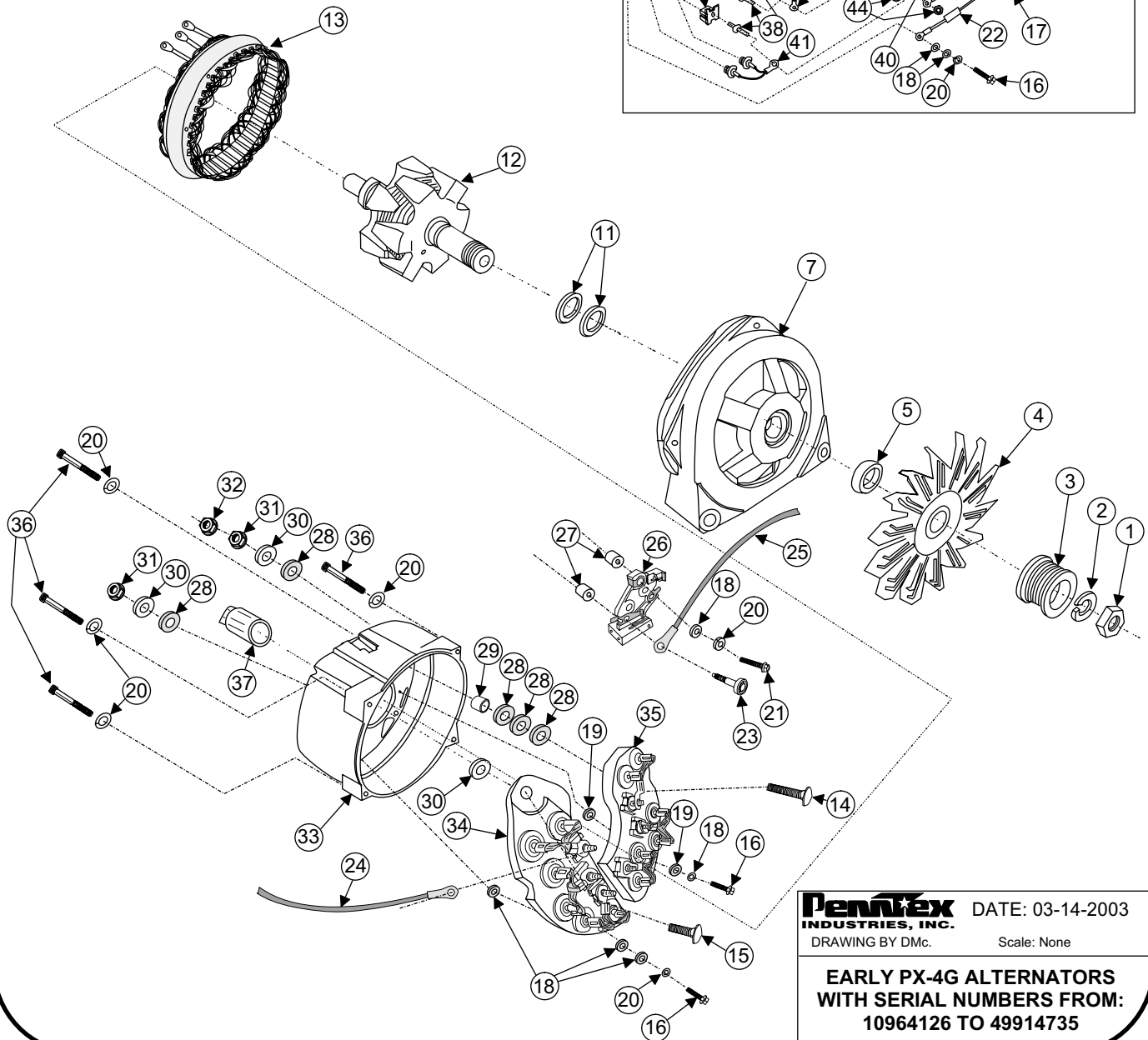
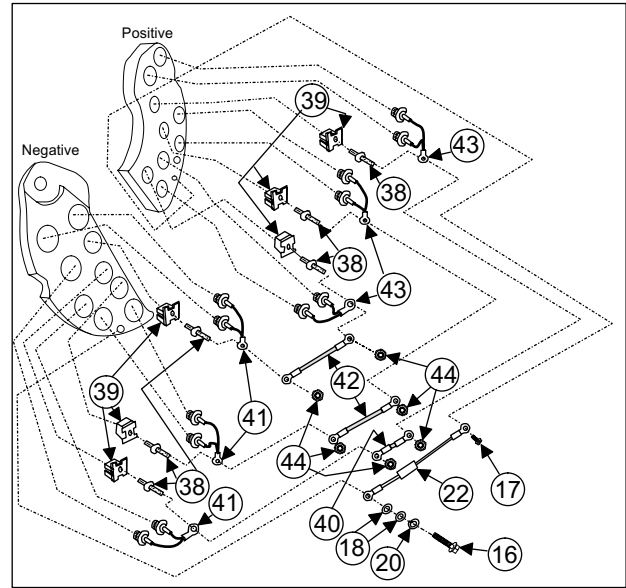
**PennTex** INDUSTRIES, INC. DATE: 03-20-2003  
DRAWING BY DMc. Scale: None

**PX-4CS ALTERNATORS WITH  
SERIAL NUMBERS FROM:  
10964126 TO PRESENT**



**NOTE:** Most of these early-model PX-4 parts are still available from PennTex, but some are in very limited quantities.

You or your customer might consider upgrading to a more modern PX-420G-5 that puts out 93 amps at 2000 rotor RPM and bolts in place of this PX4G.



**PennTex** INDUSTRIES, INC. DATE: 03-14-2003  
DRAWING BY Dmc. Scale: None

**EARLY PX-4G ALTERNATORS  
WITH SERIAL NUMBERS FROM:  
10964126 TO 49914735**

SERIAL #'s

FROM: 10964126

to 49914735

**PENNTEx INDUSTRIES, INC.**

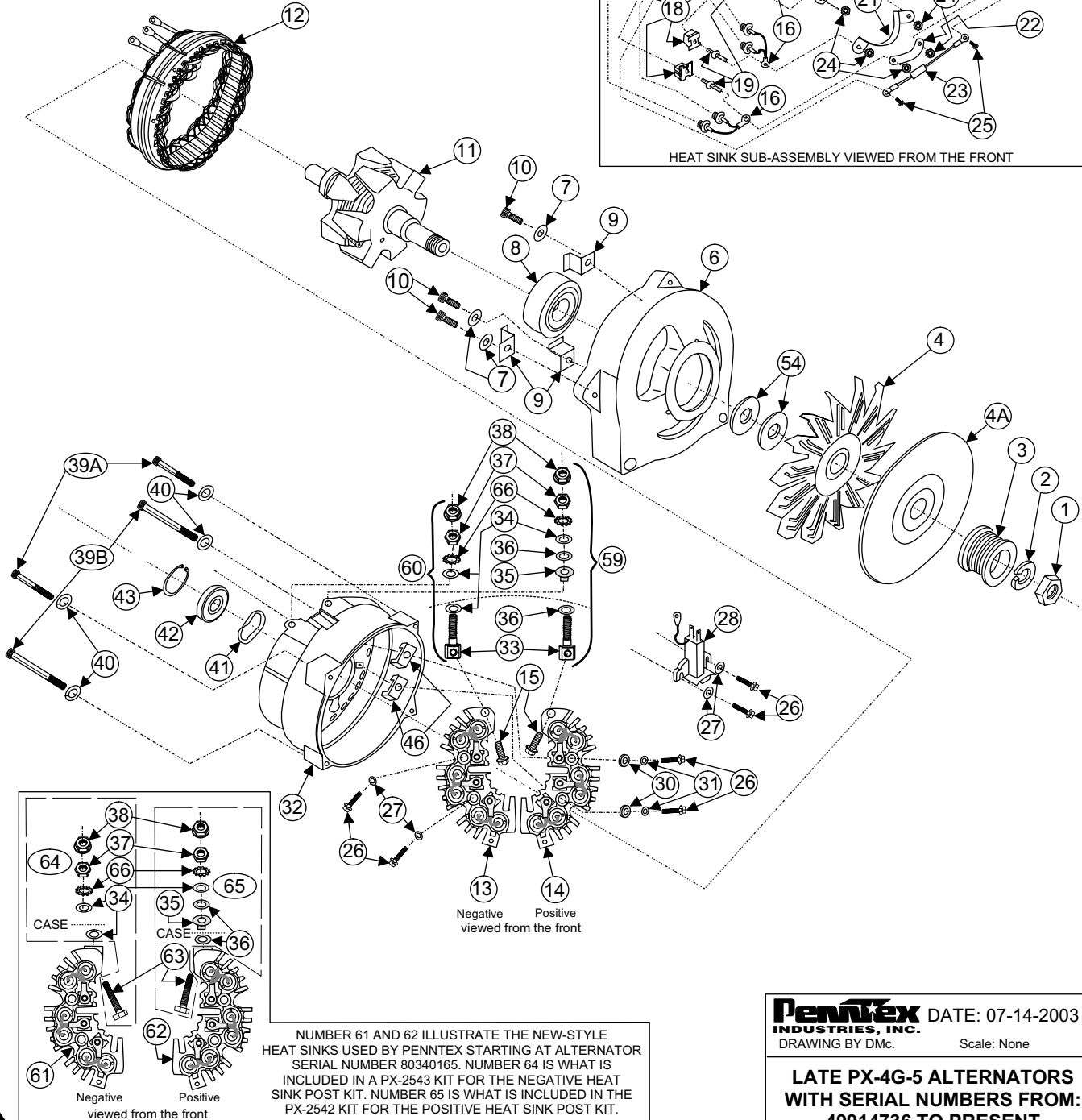
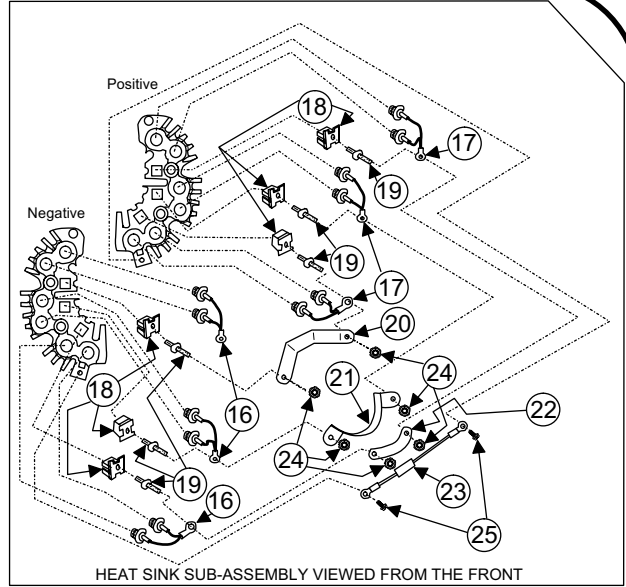
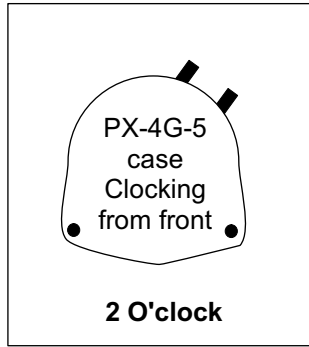
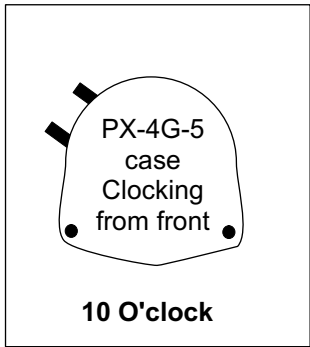
**PARTS LIST**

**EARLY PX-4 SERIES**



No.	Part #	Description	Qty.
1	PX-1060	Rotor nut	1
2	PX-1059	Rotor lock washer	1
3	PX-1353	2.0" K6 pulley	1
4	PX-1265	Fan	1
5	PX-1032	Fan spacer	1
7	PX-1282	Front housing with bearing	1
11	PX-1031	Rotor spacer	2
12	PX-1266	Rotor	1
13	PX-4503	170/200 amp stator	1
14	PX-1176	Positive battery post	1
15	PX-1279	Negative battery post	1
16	PX-1097	Heat sink screw, 8-32 x 3/4" hex	2
17	PX-1096	Capacitor screw, 8-32 x 3/8" hex	2
18	PX-1098	#8 Flat washer	5
19	PX-1049	Heat sink insulator	2
20	PX-1100	#10 lock washer	6
21	PX-1260	Brush screw	1
22	PX-4511	Capacitor assembly	1
23	PX-1207	Insulated screw	1
24	PX-2512	Blue field wire	1
25	PX-4512	Orange stator wire	1
26	PX-1192	Brush holder assembly	1
27	PX-1319	Brush holder assy. spacer	2
28	PX-1071	Battery post insulator washer	4
29	PX-1205	Battery post insulator sleeve	1
30	PX-1116	5/16" Flat washer	3
31	PX-1105	5/16" Flange nut	2
32	PX-1106	5/16" Steel lock nut	2
33	PX-1313	Rear housing	1
34	PX-4505	Negative heat sink assembly	1
35	PX-4504	Positive heat sink assembly	1
36	PX-1171	10-24 x 2-1/2" SHCS thru bolt	4
37	PX-1081	Rear bearing	1
38	PX-1040	Heat sink stud	6
39	PX-1039	Pos. & neg. stud insulator	6
40	PX-2511	Rectifier strap - small	1
41	PX-2513	Negative diode assembly	3
42	PX-4515	diode strap	2
43	PX-2512	Positive diode assembly	3

No.	Part #	Description	Qty.
44	PX-1099	8-32 keps nut	6
PennTex 08-04-2003			



NUMBER 61 AND 62 ILLUSTRATE THE NEW-STYLE HEAT SINKS USED BY PENNTEX STARTING AT ALTERNATOR SERIAL NUMBER 80340165. NUMBER 64 IS WHAT IS INCLUDED IN A PX-2543 KIT FOR THE NEGATIVE HEAT SINK POST KIT. NUMBER 65 IS WHAT IS INCLUDED IN THE PX-2542 KIT FOR THE POSITIVE HEAT SINK POST KIT.

**PennTex** DATE: 07-14-2003  
INDUSTRIES, INC. DRAWING BY DMc. Scale: None

**LATE PX-4G-5 ALTERNATORS  
WITH SERIAL NUMBERS FROM:  
49914736 TO PRESENT**



SERIAL #'s

FROM: 49914736

to Present

**PENNTEx INDUSTRIES, INC.**

**PARTS LIST**

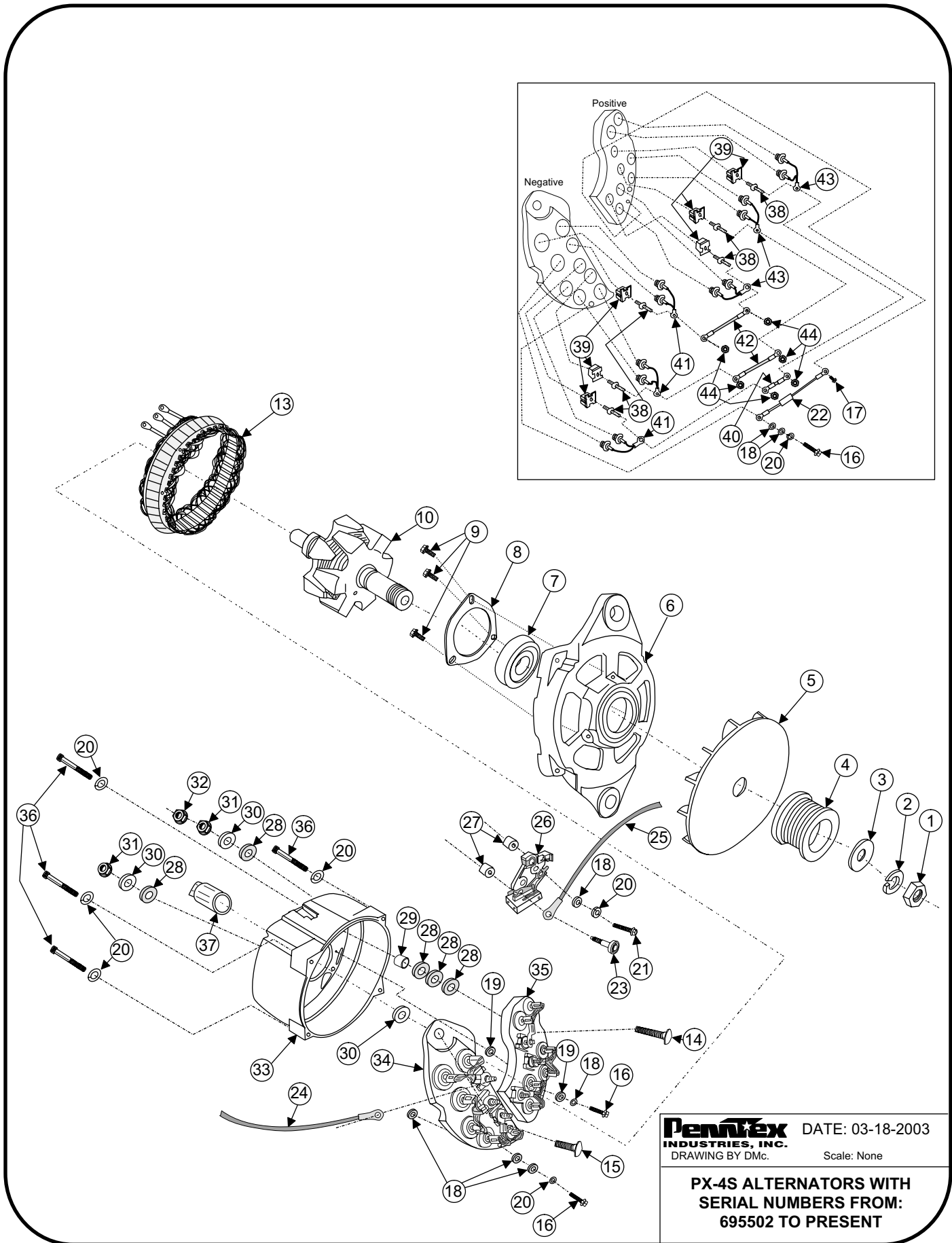
**LATE PX-4G-5 SERIES**



No.	Part #	Description	Qty.
1	PX-1060	Rotor nut	1
2	PX-1059	Rotor lock washer	1
3	PX-1128	K6 pulley (use with baffle plate)	1
4	PX-1265	Fan	1
4A	PX-4522	Fan baffle plate(use PX-1128)	1
6	PX-1348	Front housing	1
7	PX-1100	Retainer screw lockwasher	3
8	PX-1074	Front bearing	1
9	PX-1312	Front bearing retainer clips	3
10	PX-1305	Front bearing retainer screws	3
11	PX-1055	Rotor	1
12	PX-2503-5	Stator, PX-4G-5	1
12A	PX-2503-3	Stator, PX-4G-5, externally rectified	1
13	PX-2505	Negative heat sink assembly	1
14	PX-2504	Positive heat sink assembly	1
15	PX-1102	Battery post bolt	2
16	PX-2513	Negative diode assembly	3
17	PX-2512	Positive diode assembly	3
18	PX-1039	Pos. & neg. stud insulator	6
19	PX-1040	Pos. & neg. heat sink stud	6
20	PX-1350	Rectifier strap - large	1
21	PX-1351	Rectifier strap - medium	1
22	PX-1352	Rectifier strap - small	1
23	PX-4511	Capacitor	1
24	PX-1099	8-32 keps nut	6
25	PX-1096	Capacitor screw	2
26	PX-1097	8-32 x 3/4" hex bolt	6
27	PX-1098	#8 flat washer	4
28	PX-2506	Brush holder assembly	1
30	PX-1049	Heat sink insulator	2
31	PX-1108	M4 flat washer (smaller than # 27)	2
32	PX-1124	Rear housing	1
33	PX-1066	Battery post	2
34	PX-1116	5/16" flat washer	3
35	PX-1070	Battery post insulator (white)	1
36	PX-1071	Bat. post insltr. washer (red)	2
37	PX-1105	5/16" Flange nut	2
38	PX-1106	5/16" steel locknut	2
39A	PX-1107	Thru bolt, 1/4-20x2" SHCS	1

No.	Part #	Description	Qty.
39B	PX-1294	Thru bolt SHCS, 1/4-20 x 3"	2
40	PX-1104	Thru bolt lock washer	4
41	PX-1249	Wave spring	1
42	PX-1025	Rear bearing	1
43	PX-1366	Rear bearing C-ring	1
46	PX-1072	Pos. heat sink insulator	2
50	PX-1305	Retainer screw	3
54	PX-1273	Fan spacer	2
59	PX-2520	Pos. battery post assembly	1
60	PX-2521	Neg. battery post assembly	1

PennTex 09-26-2003



**PennTex** INDUSTRIES, INC. DATE: 03-18-2003  
DRAWING BY DMc. Scale: None

**PX-4S ALTERNATORS WITH  
SERIAL NUMBERS FROM:  
695502 TO PRESENT**

SERIAL #'s  
FROM: 695502 to Present

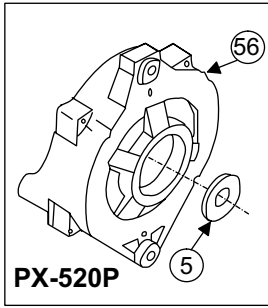
PENNTEx INDUSTRIES, INC.



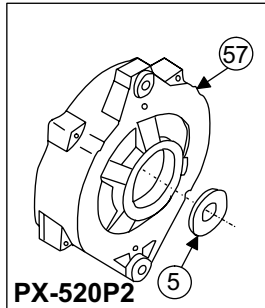
**PARTS LIST  
PX-4S SERIES**

No.	Part #	Description	Qty.
1	PX-1083	Rotor nut	1
2	PX-1059	Rotor lock washer	1
3	PX-1058	Fan spacer	1
4	PX-1355	2.5" K8 pulley	1
5	PX-1189	Fan	1
6	PX-1184	Front housing	1
7	PX-1052	Front bearing	1
8	PX-1185	Front bearing retainer	1
9	PX-1054	Fr. bearing retainer screws	3
10	PX-1187	Rotor	1
13	PX-4503	200 amp stator	1
14	PX-1176	Pos. bat. post: 5/16" x 18 x 1-1/2"	1
15	PX-1279	neg. bat. post: 5/16" x 18 x 1-1/4"	1
16	PX-1097	Heat sink screw: 8-32 x 3/4" hex	2
17	PX-1096	Capacitor screw: 8-32 x 3/8" hex	1
18	PX-1098	#8 Flat washer	5
19	PX-1049	Heat sink insulator	2
20	PX-1100	#10 Thru bolt lock washer	6
21	PX-1260	Brush screw: 8-32 x 1" HWH-MS serr.	1
22	PX-4511	Capacitor	1
23	PX-1207	Insulated screw	1
24	PX-4513	Blue field wire	1
25	PX-4512	Orange stator wire	1
26	PX-1192	Brush holder assembly	1
27	PX-1319	Brush holder assy. spacer	1
28	PX-1071	Battery post insulator, fiber	4
29	PX-1205	Bat. post insulator, teflon sleeve	1
30	PX-1116	5/16" Flat washer	3
31	PX-1105	5/16" Flange nut	2
32	PX-1106	5/16" Steel locknut	2
33	PX-1263	Rear housing	1
34	PX-4505	Neg. heat sink assembly	1
35	PX-4504	Positive heat sink assembly	1
36	PX-1171	Thru bolt: 10-24 x 2-1/2" SHCS	4
37	PX-1081	Rear bearing	1
38	PX-1040	Heat sink stud	6
39	PX-1039	Heat sink insulator	6
40	PX-2511	Small rectifier strap	1
41	PX-2513	Negative diode assembly	3

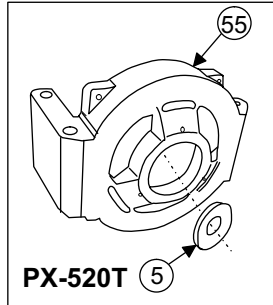
No.	Part #	Description	Qty.
42	PX-4515	Rectifier straps	2
43	PX-2512	Positive diode assembly	3
44	PX-1099	8-32 keps nut	6
PennTex 07-22-2003			



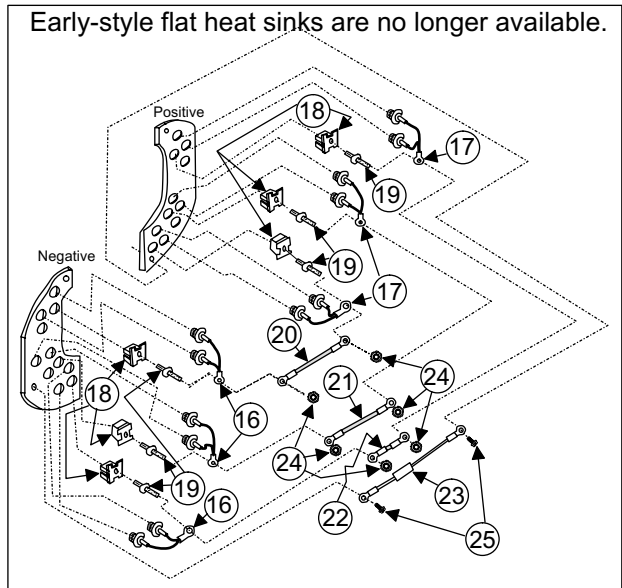
PX-520P



PX-520P2

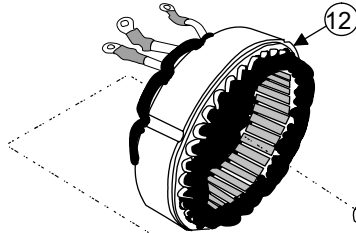


PX-520T



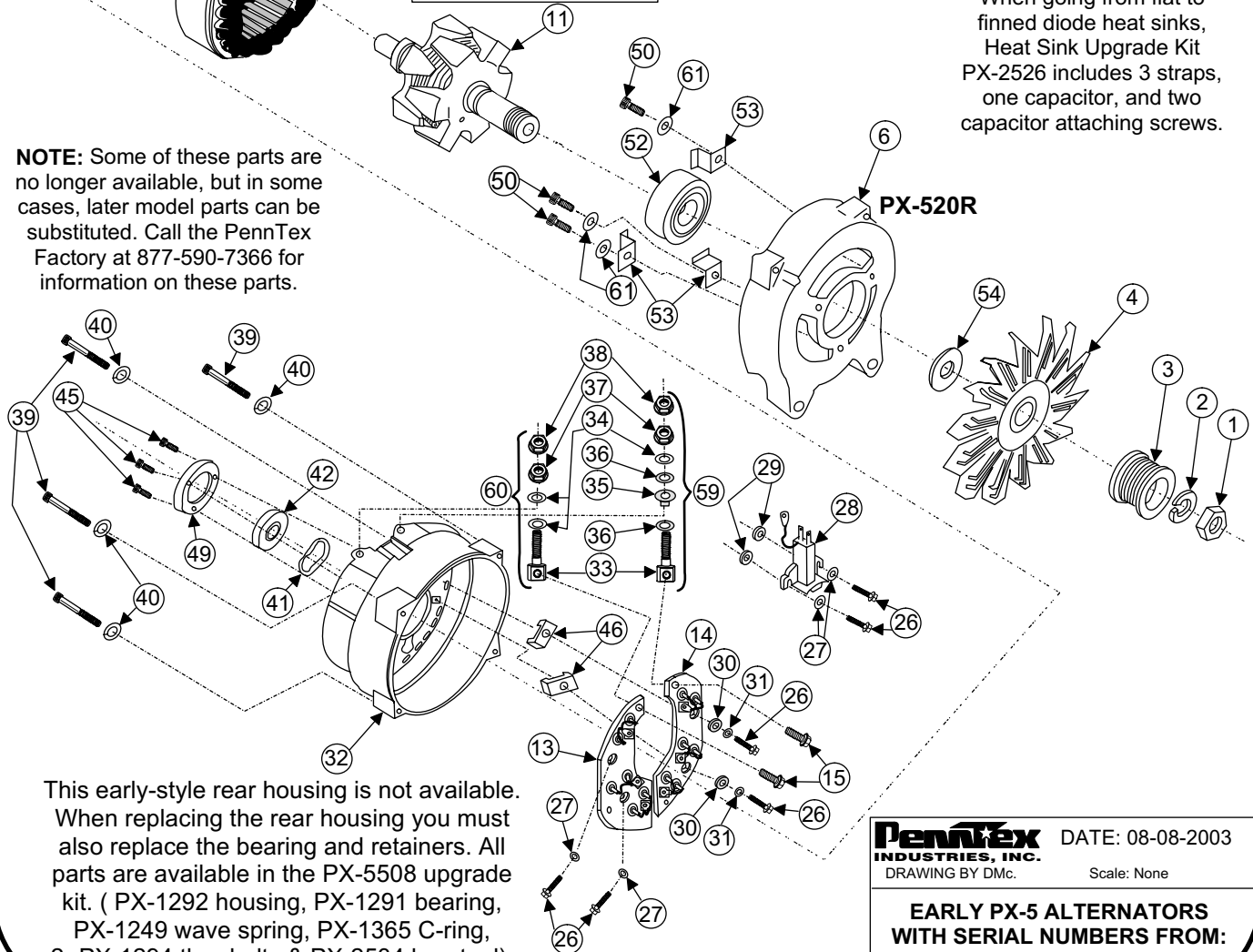
Early-style flat heat sinks are no longer available.

Stators for early flat heat sinks still available. Make sure part # ends with "L" for "Long Stator Lead". If using late-style heat sinks, Part # should not have "L".



When going from flat to finned diode heat sinks, Heat Sink Upgrade Kit PX-2526 includes 3 straps, one capacitor, and two capacitor attaching screws.

**NOTE:** Some of these parts are no longer available, but in some cases, later model parts can be substituted. Call the PennTex Factory at 877-590-7366 for information on these parts.



This early-style rear housing is not available. When replacing the rear housing you must also replace the bearing and retainers. All parts are available in the PX-5508 upgrade kit. ( PX-1292 housing, PX-1291 bearing, PX-1249 wave spring, PX-1365 C-ring, 2- PX-1294 thru-bolts & PX-2534 brg. tool).

**PennTex** INDUSTRIES, INC. DATE: 08-08-2003  
DRAWING BY Dmc. Scale: None

**EARLY PX-5 ALTERNATORS  
WITH SERIAL NUMBERS FROM:  
6976693 TO 79916154**

## PENNTEX INDUSTRIES, INC.



**PARTS LIST  
EARLY PX-5 SERIES**

No.	Part #	Description	Qty.
1	PX-1060	Rotor nut	1
2	PX-1059	Rotor lock washer	1
3A	PX-1129	K6 pulley PX-5P, PX-5P2	1
3B	PX-1130	K8 pulley PX-5R, PX-5T	1
4	PX-1057	Fan	1
5	PX-1058	Fan spacer PX-5P, 5P2, 5T	1
6	PX-1411	Front housing "R"	1
11	PX-1300	Rotor	1
12A	PX-1299L	200 Amp stator- long leads	1
12B	PX-1299-3	200 Amp stator- ext. rectified	1
13	*	Neg. heat sink assembly	1
14	*	Pos. heat sink assembly	1
15	PX-1102	Battery post bolt	2
16	PX-2513	Negative diode assembly	3
17	PX-2512	Positive diode assembly	3
18	PX-1039	Pos. & neg. stud insulator	6
19	PX-1040	Heat sink stud	6
20	*	Rectifier strap - large	1
21	*	Rectifier strap - medium	1
22	*	Rectifier strap - small	1
	PX-2526	Heat sink strap upgrade kit***	1
23	PX-2524	Capacitor assembly	1
24	PX-1099	8-32 keps nut	6
25	PX-1096	Capacitor screw, 8-32 x 3/8" hex	2
26	PX-1097	Heat sink screw, 8-32 x 3/4" hex	6
27	PX-1098	#8 Flat washer	4
28	PX-2506	Brush holder assembly	1
29	PX-1148	Brush holder spacer	2
30	PX-1049	Heat sink insulator	2
31	PX-1108	M4 flat washer	2
32	*	Rear housing	1
	PX-5508	Rear housing upgrade kit***	1
33	PX-1066	Battery post	2
34	PX-1116	5/16" Flat washer	3
35	PX-1070	Battery post insulator	1
36	PX-1071	Bat. post insulator washer	2
37	PX-1105	5/16" Flange nut	2
38	PX-1106	5/16" Steel locknut	2
39	PX-1294	Thru bolt SHCS	4

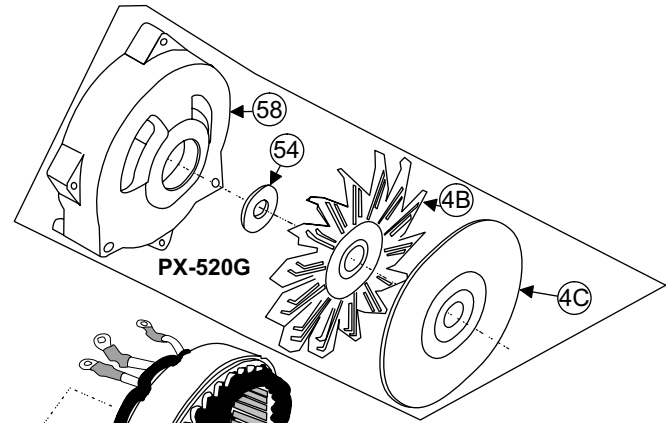
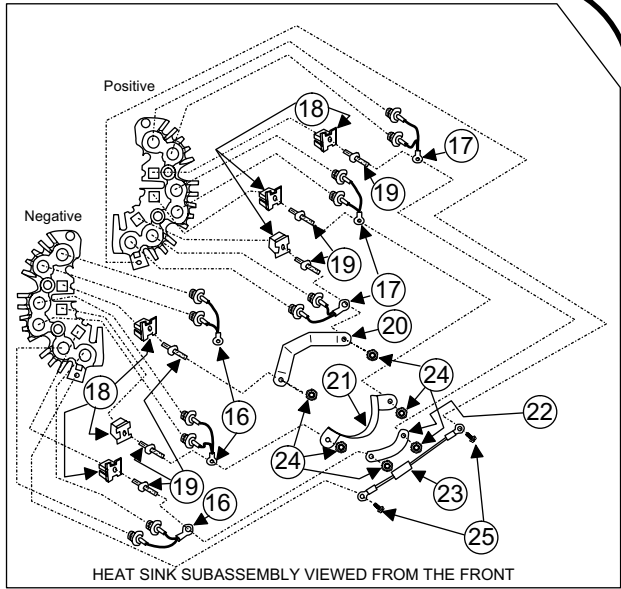
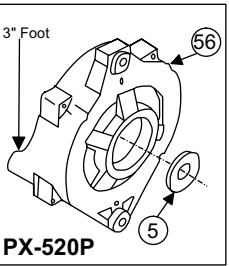
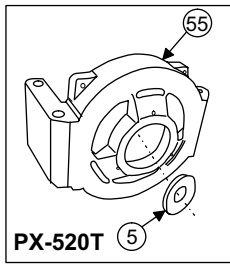
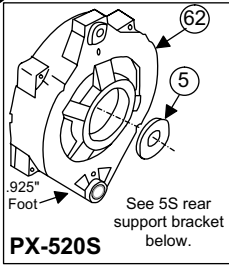
No.	Part #	Description	Qty.
40	PX-1104	Thru bolt lock washer	4
41	PX-1249	Wave spring	1
42	PX-1291	Rear bearing	1
45	**	Brg. retainer screw	3
46	PX-1072	Pos. heat sink insulator	2
49	**	Brg. retainer cap	1
50	PX-1305	Frnt. brg. retainer screw	3
52	PX-1074	Front bearing	1
53	PX-1312	Z-clip front bearing retainer	3
54	PX-1273	PX-5R fan spacer	1
55	PX-1122	5T front housing	1
56	PX-1051	5P front housing	1
57	PX-1123	5P2 front housing	1
59	PX-2520	Positive post assy.	1
60	PX-2521	Negative post assembly	1
61	PX-1100	#10 Lock washer	3
	PX-1258	PX-5R rear support brkt.***	1
	PX-2526	Heat sink upgrade kit***	1

**\*Not available but upgraded. Call factory for replacement parts information.**

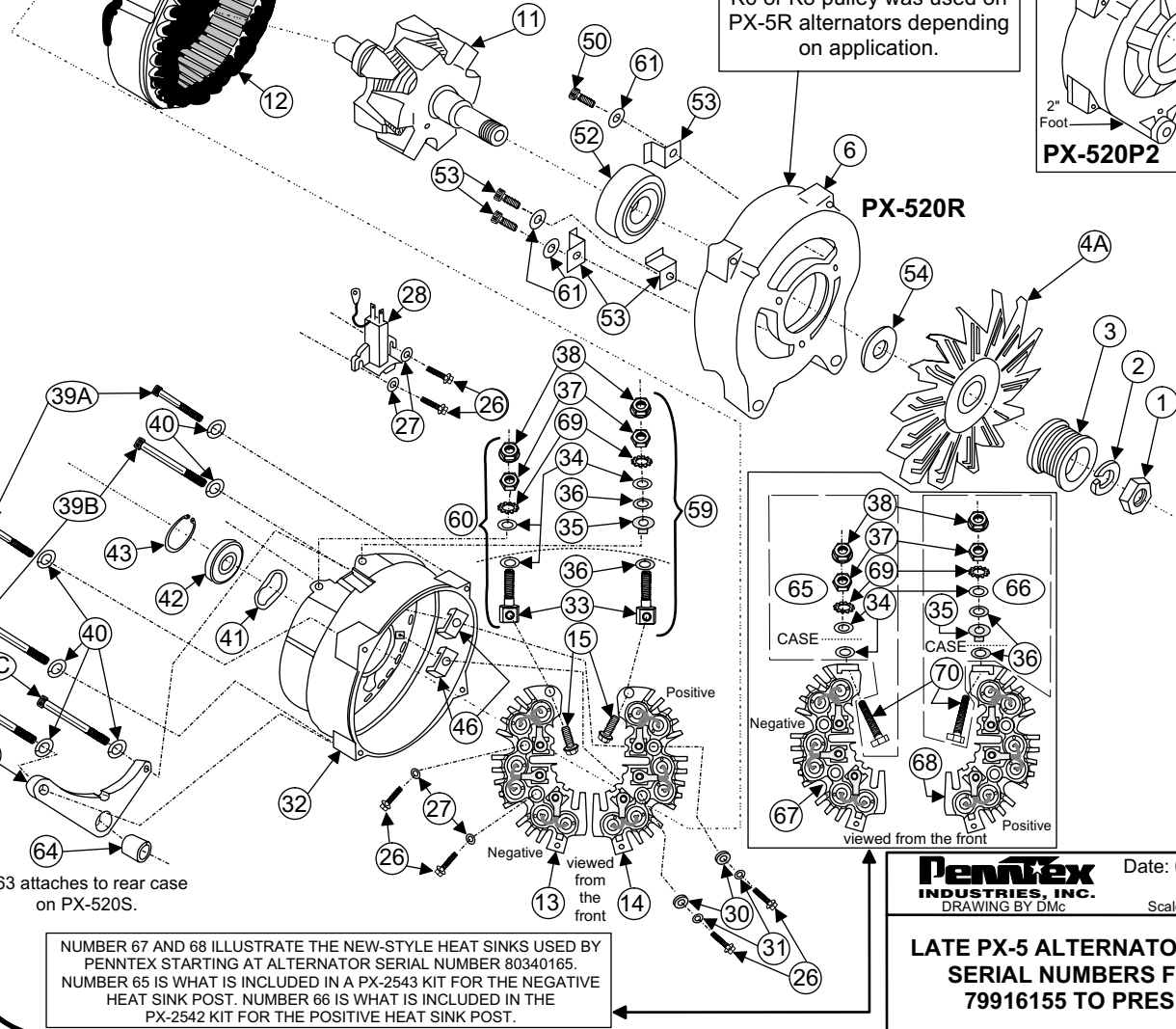
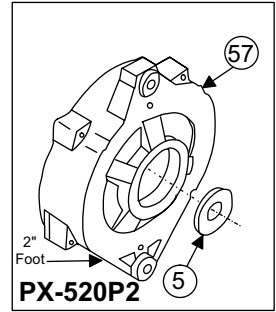
**\*\*Part not available.**

**\*\*\*Not shown in drawing.**

PennTex 07-16-2003



NOTE: In late 2001 beginning with S# 100129598, either a K6 or K8 pulley was used on PX-5R alternators depending on application.



NUMBER 67 AND 68 ILLUSTRATE THE NEW-STYLE HEAT SINKS USED BY PENNTEX STARTING AT ALTERNATOR SERIAL NUMBER 80340165. NUMBER 65 IS WHAT IS INCLUDED IN A PX-2542 KIT FOR THE NEGATIVE HEAT SINK POST. NUMBER 66 IS WHAT IS INCLUDED IN THE PX-2542 KIT FOR THE POSITIVE HEAT SINK POST.

**PennTex**  
INDUSTRIES, INC.  
DRAWING BY DMc

Date: 07-14-03  
Scale: None

**LATE PX-5 ALTERNATORS WITH SERIAL NUMBERS FROM: 79916155 TO PRESENT**

**PENNTEx INDUSTRIES, INC.**

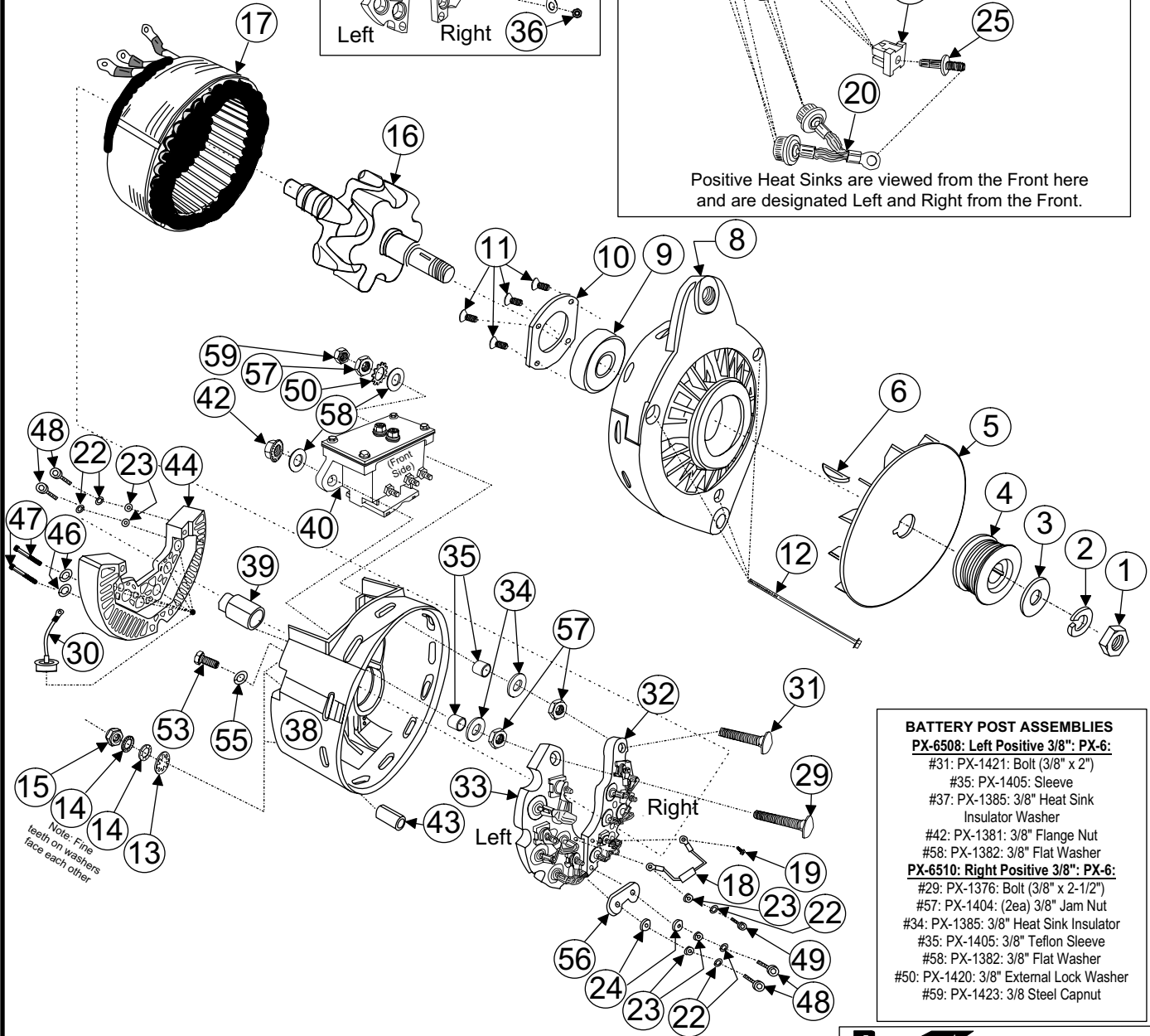
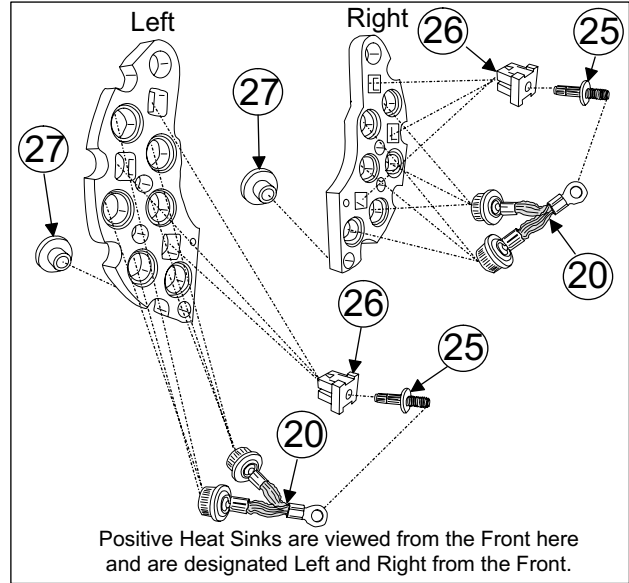
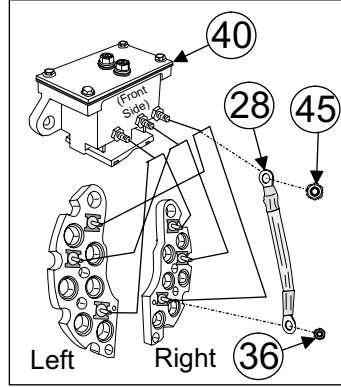
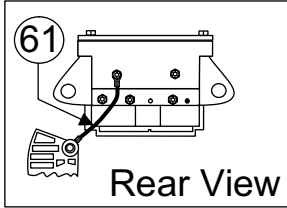
**PARTS LIST**

**LATE PX-5 SERIES**



No.	Part #	Description	Qty.
1	PX-1060	Rotor nut	1
2	PX-1059	Rotor lock washer	1
3	PX-1128	K6 pulley PX-5G	1
3A	PX-1129	K6 Pulley PX-5P, PX-5P2***	1
3B	PX-1129	K6 Pulley PX-5R(Late 2001 & up)***	1
3C	PX-1130	K8 Pulley PX-5R (Prior to K6 change in 2001)***	1
3D	PX-1130	K8 Pulley PX5S, PX5T***	1
3E	PX-1155	K7 pulley PX-5P2 Dodge***	1
4A	PX-1057	Fan: all PX-5 except 5G	1
4B	PX-1265	Fan: PX-5G	1
4C	PX-4522	Fan baffle plate: PX-5G	1
5	PX-1058	Fan spacer PX-5P, 5P2, 5T	1
6	PX-1411	Front housing PX-5R	1
11	PX-1300	Rotor	1
12A	PX-1299	200 Amp stator	1
12B	PX-1299-3	200 Amp stator- ext. rectified	1
13	PX-2505	Negative heat sink assembly	1
14	PX-2504	Positive heat sink assembly	1
15	PX-1102	Battery post bolt	2
16	PX-2513	Negative diode assembly	3
17	PX-2512	Positive diode assembly	3
18	PX-1039	Pos. & neg. stud insulator	6
19	PX-1040	Heat sink stud	6
20	PX-1350	Rectifier strap - large	1
21	PX-1351	Rectifier strap - medium	1
22	PX-1352	Rectifier strap - small	1
23	PX-4511	Capacitor assembly	1
24	PX-1099	8-32 keps nut	6
25	PX-1096	Capacitor screw, 8-32 x 3/8" hex	2
26	PX-1097	Heat sink screw, 8-32 x 3/4" hex	6
27	PX-1098	#8 Flat washer	4
28	PX-2506	Brush holder assembly	1
30	PX-1049	Heat sink insulator	2
31	PX-1108	M4 flat washer (smaller than # 27)	2
32A	PX-1292	Rear housing	1
33	PX-1066	Battery post	2
34	PX-1116	5/16" Flat washer	3
35	PX-1070	Bat. post insulator (white)	1

No.	Part #	Description	Qty.
36	PX-1071	Bat. post insulator washer (red)	2
38	PX-1106	Steel locknut	2
39A	PX-1294	Thru bolt	2
39B	PX-1361	Thru bolt	2
39C	PX-1340	Thru bolt, PX-5S rear brkt	2
40	PX-1104	Thru bolt lock washer	4
41	PX-1249	Wave spring	1
42	PX-1291	Rear bearing	1
43	PX-1366	Rear brg. C-ring	1
46	PX-1072	Pos. heat sink insulator	2
50	PX-1305	Retainer screw	3
52	PX-1074	Front bearing	1
53	PX-1312	Front bearing Z-clip	3
54	PX-1273	PX-5R fan spacer	1
55	PX-1122	PX-5T front housing	1
56	PX-1051	PX-5P front housing	1
57	PX-1123	PX-5P2 front housing	1
58	PX-1348	PX-5G front housing	1
59	PX-2520	Pos. post assy.	1
60	PX-2521	Neg. post assy.	1
61	PX-1100	#10 Lock washer	3
62	PX-1342	PX-5S front housing	1
63	PX-1339	PX-5S rear bracket	1
64	PX-1341	PX-5S rear brkt. leg spacer	1
65	PX-2543	Neg. post assy. after S# 80340165	1
66	PX-2542	Pos. post assy. after S# 80340165	1
67	PX-2541	Neg. heat sink assy. after S# 80340165	1
68	PX-2540	Pos. heat sink assy. after S# 80340165	1
69	PX-1516	5/16" Ext. tooth lock washer	2
70	PX-2539	5/16" x 1-3/4" post	2
	PX-1258	PX-5R rear support brkt.***	1
<b>***Not shown on drawing</b>			
PennTex 08-04-2003			



- BATTERY POST ASSEMBLIES**  
**PX-6508: Left Positive 3/8": PX-6:**  
 #31: PX-1421: Bolt (3/8" x 2")  
 #35: PX-1405: Sleeve  
 #37: PX-1385: 3/8" Heat Sink Insulator Washer  
 #42: PX-1381: 3/8" Flange Nut  
 #58: PX-1382: 3/8" Flat Washer  
**PX-6510: Right Positive 3/8": PX-6:**  
 #29: PX-1376: Bolt (3/8" x 2-1/2")  
 #57: PX-1404: (2ea) 3/8" Jam Nut  
 #34: PX-1385: 3/8" Heat Sink Insulator  
 #35: PX-1405: 3/8" Teflon Sleeve  
 #58: PX-1382: 3/8" Flat Washer  
 #50: PX-1420: 3/8" External Lock Washer  
 #59: PX-1423: 3/8 Steel Capnut

- PX-6: PX-6511 MOUNTING KIT**  
 #64: PX-1396 Long Bolt 1ea.  
 #62: PX-1252 Lock Washer 2  
 #65: PX-1253 Nut 1  
 #63: PX-1251 Bolt 1  
 #53: PX-1401 Ground Bolt 1  
 #55: PX-1116 5/16" Washer 1

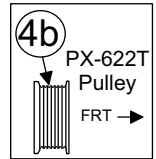
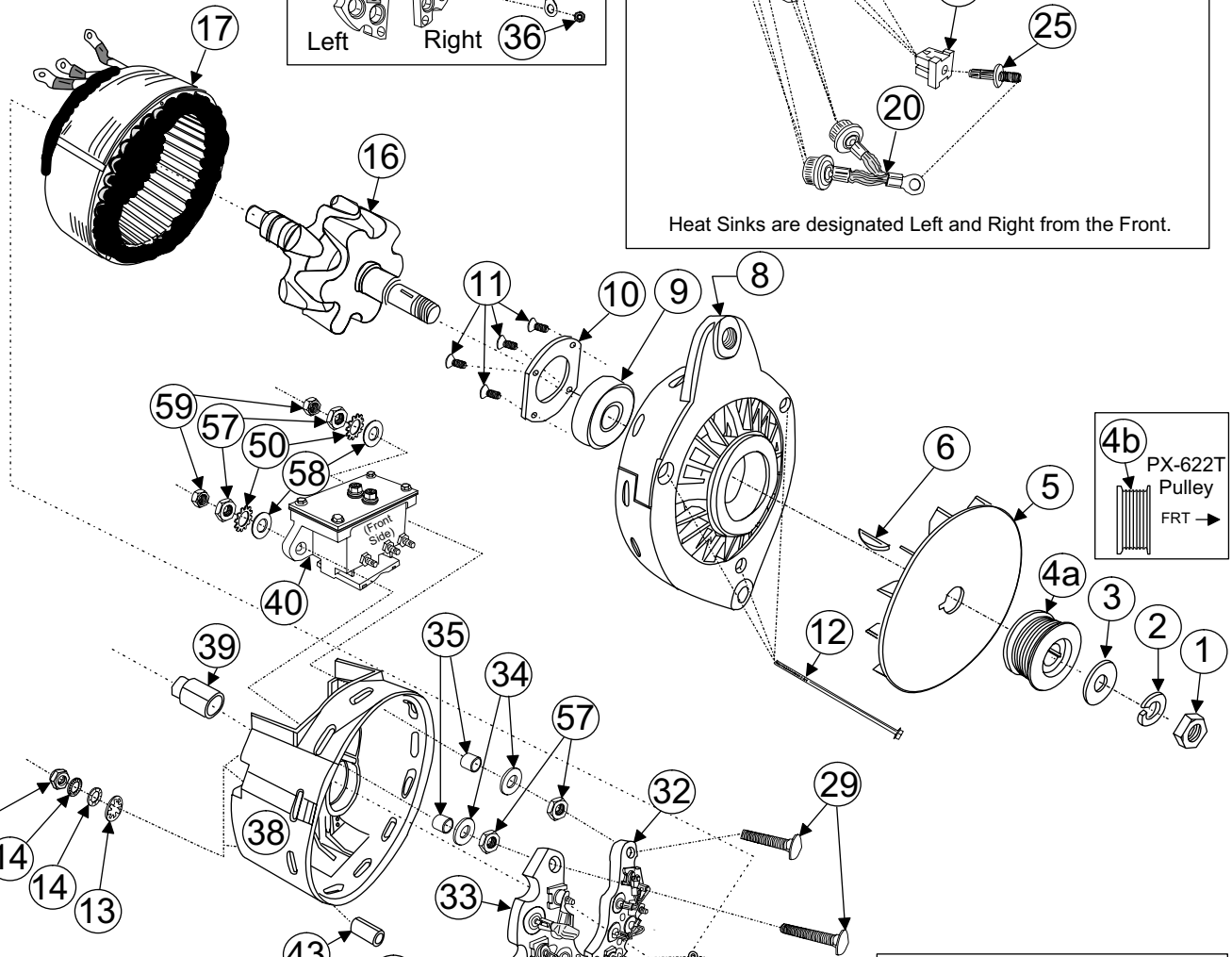
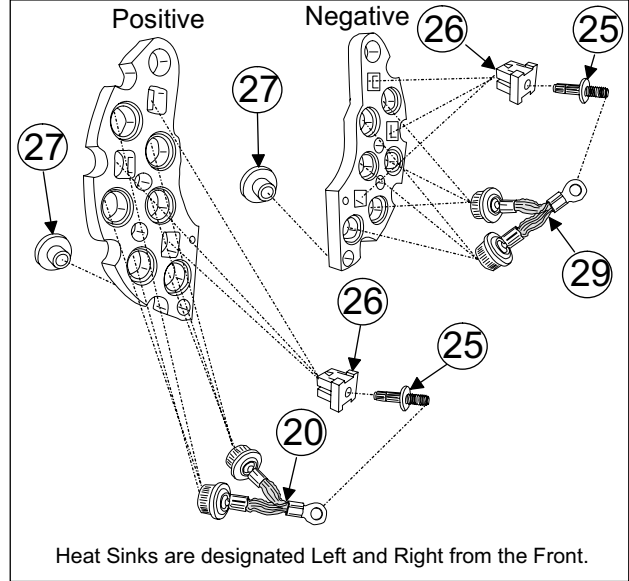
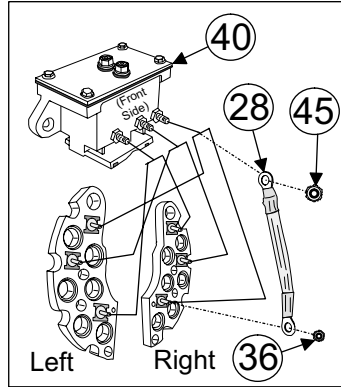
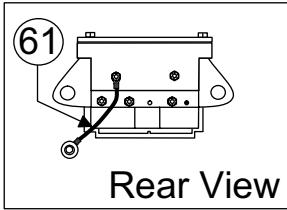
**PennTex**  
INDUSTRIES, INC.  
Date: 07/18/03 | Drawn By: DMc

**PX-614, PX-616, PX-619**  
**24 Volt Alternators**

Not to scale







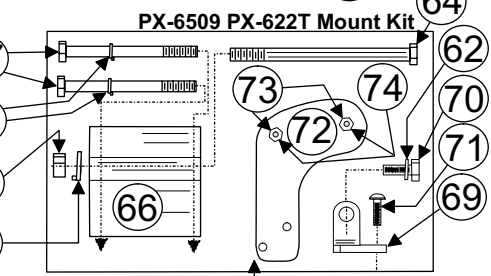
**BATTERY POST ASSEMBLIES**  
PX-6510: (1 kit for each side)

#29: PX-1376: Bolt (3/8" x 2-1/2")	1ea.
#57: PX-1404: 3/8" Jam Nut	2
#34: PX-1385: 3/8" Heat Sink Insulator	1
#35: PX-1405: 3/8" Teflon Sleeve	1
#58: PX-1382: 3/8" Flat Washer	1
#50: PX-1420: 3/8" External Lock Washer	1
#59: PX-1423: 3/8 Steel Capnut	1

**Penntex**  
INDUSTRIES, INC.

Date: 06/20/03 Drawn By: DMc

**PX-622** Not to scale



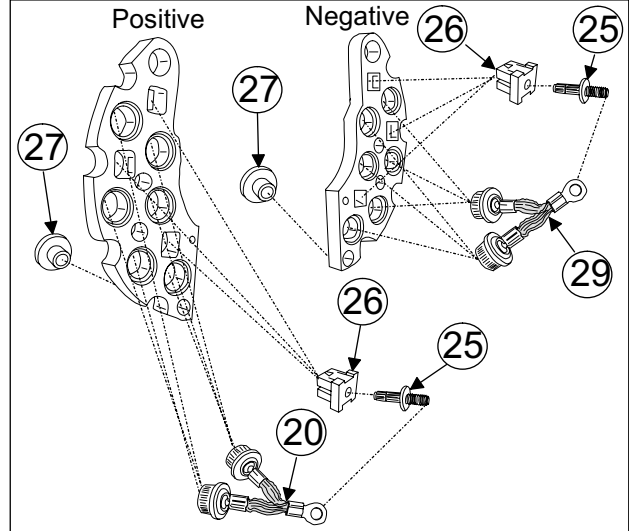
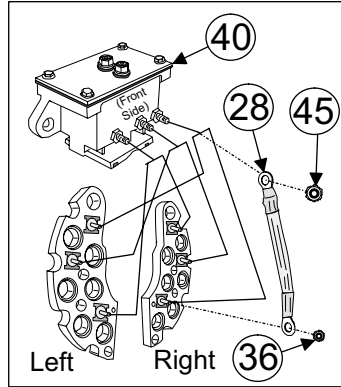
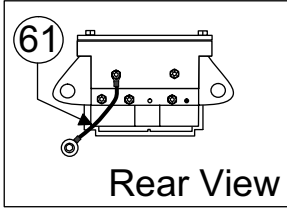
**PX-622T Mount Kit: PX-6509**

#62 PX-1252 Lock Wshr- 2ea.	#69 PX-1215 T-angle Brkt- 1	#74 PX-1104 G/P Brkt. Washer- 2ea
#64 PX-1396 Long Bolt- 1	#70 PX-1251 Mount Bolt- 1	
#65 PX-1253 Hex Nut- 1	#71 PX1276 Buttonhead Blt- 1	
#66 PX1214 Mount Block- 1	#72 PX-5505 G/P Relay Brkt-1	
#67 PX-6512 Mnt. Blk. Bolt- 2	#73 PX-0158 Brkt. Nut- 2	

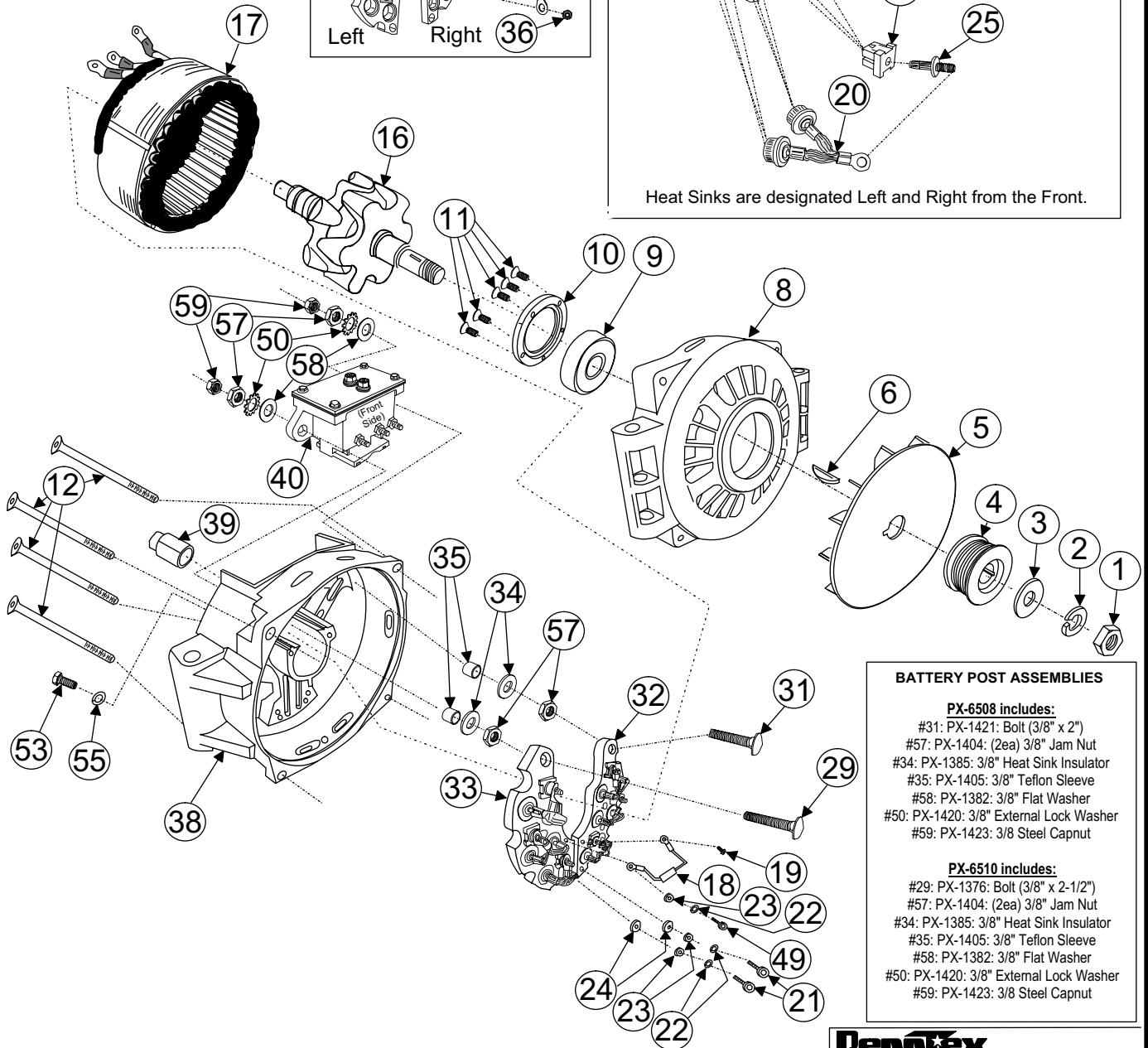
**PX-6S: PX-6511 MOUNTING KIT**

#64: PX-1396 Long Bolt	1ea.
#62: PX-1252 Lock Washer	2
#65: PX-1253 Nut	1
#70: PX-1251 Bolt	1
#53: PX-1401 Ground Bolt	1
#55: PX-1116 5/16" Washer	1





Heat Sinks are designated Left and Right from the Front.



**BATTERY POST ASSEMBLIES**

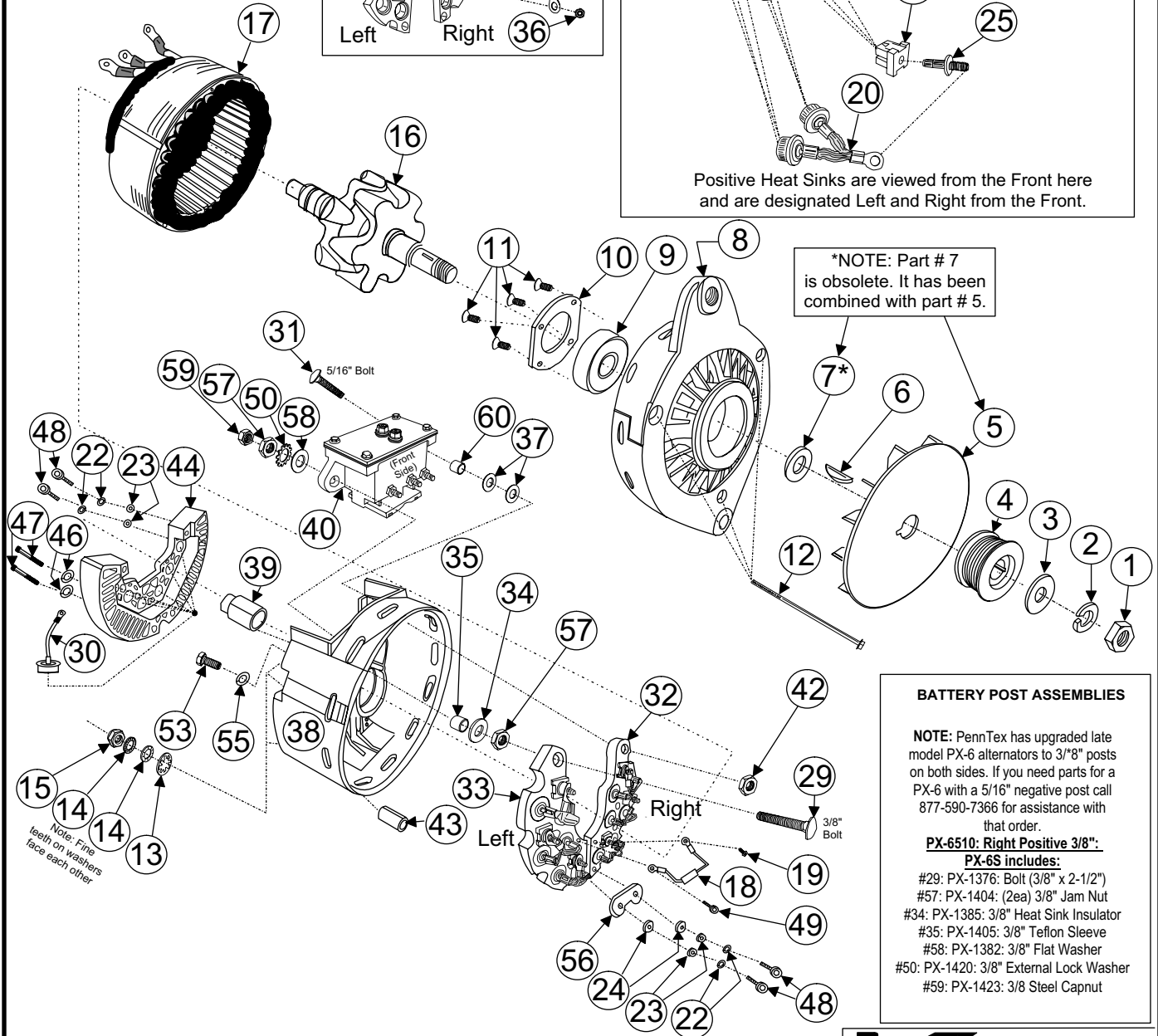
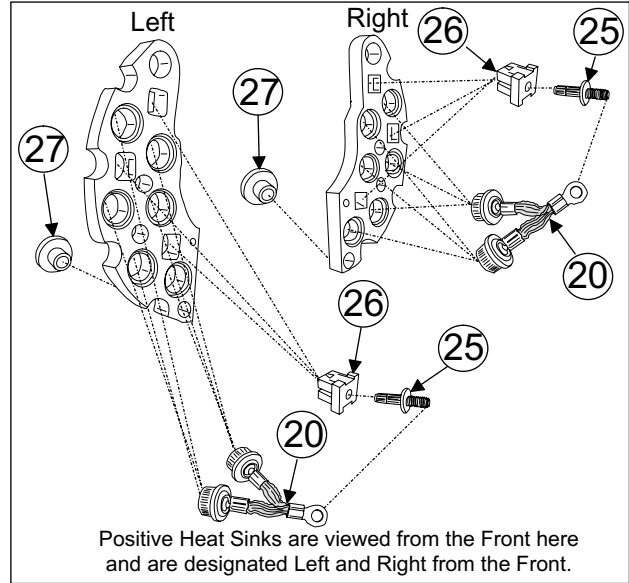
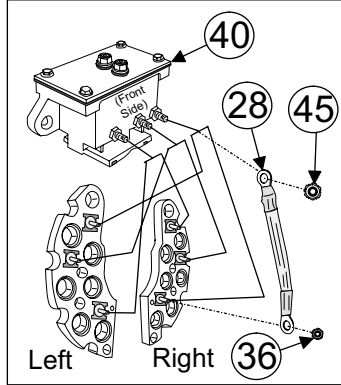
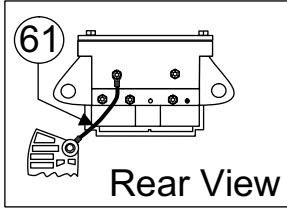
**PX-6508 includes:**

- #31: PX-1421: Bolt (3/8" x 2")
- #57: PX-1404: (2ea) 3/8" Jam Nut
- #34: PX-1385: 3/8" Heat Sink Insulator
- #35: PX-1405: 3/8" Teflon Sleeve
- #58: PX-1382: 3/8" Flat Washer
- #50: PX-1420: 3/8" External Lock Washer
- #59: PX-1423: 3/8 Steel Capnut

**PX-6510 includes:**

- #29: PX-1376: Bolt (3/8" x 2-1/2")
- #57: PX-1404: (2ea) 3/8" Jam Nut
- #34: PX-1385: 3/8" Heat Sink Insulator
- #35: PX-1405: 3/8" Teflon Sleeve
- #58: PX-1382: 3/8" Flat Washer
- #50: PX-1420: 3/8" External Lock Washer
- #59: PX-1423: 3/8 Steel Capnut





**BATTERY POST ASSEMBLIES**

**NOTE:** PennTex has upgraded late model PX-6 alternators to 3/8" posts on both sides. If you need parts for a PX-6 with a 5/16" negative post call 877-590-7366 for assistance with that order.

**PX-6510: Right Positive 3/8":**  
**PX-6S includes:**

- #29: PX-1376: Bolt (3/8" x 2-1/2")
- #57: PX-1404: (2ea) 3/8" Jam Nut
- #34: PX-1385: 3/8" Heat Sink Insulator
- #35: PX-1405: 3/8" Teflon Sleeve
- #58: PX-1382: 3/8" Flat Washer
- #50: PX-1420: 3/8" External Lock Washer
- #59: PX-1423: 3/8 Steel Capnut

**PX-6S: PX-6511 MOUNTING KIT**

#64: PX-1396 Long Bolt	1ea.
#62: PX-1252 Lock Washer	2
#65: PX-1253 Nut	1
#63: PX-1251 Bolt	1
#53: PX-1401 Ground Bolt	1
#55: PX-1116 5/16" Washer	1

**PennTex**  
INDUSTRIES, INC.

Date: 05/19/03 | Drawn By: DMc

Early PX-627 up to  
Serial # 10023541

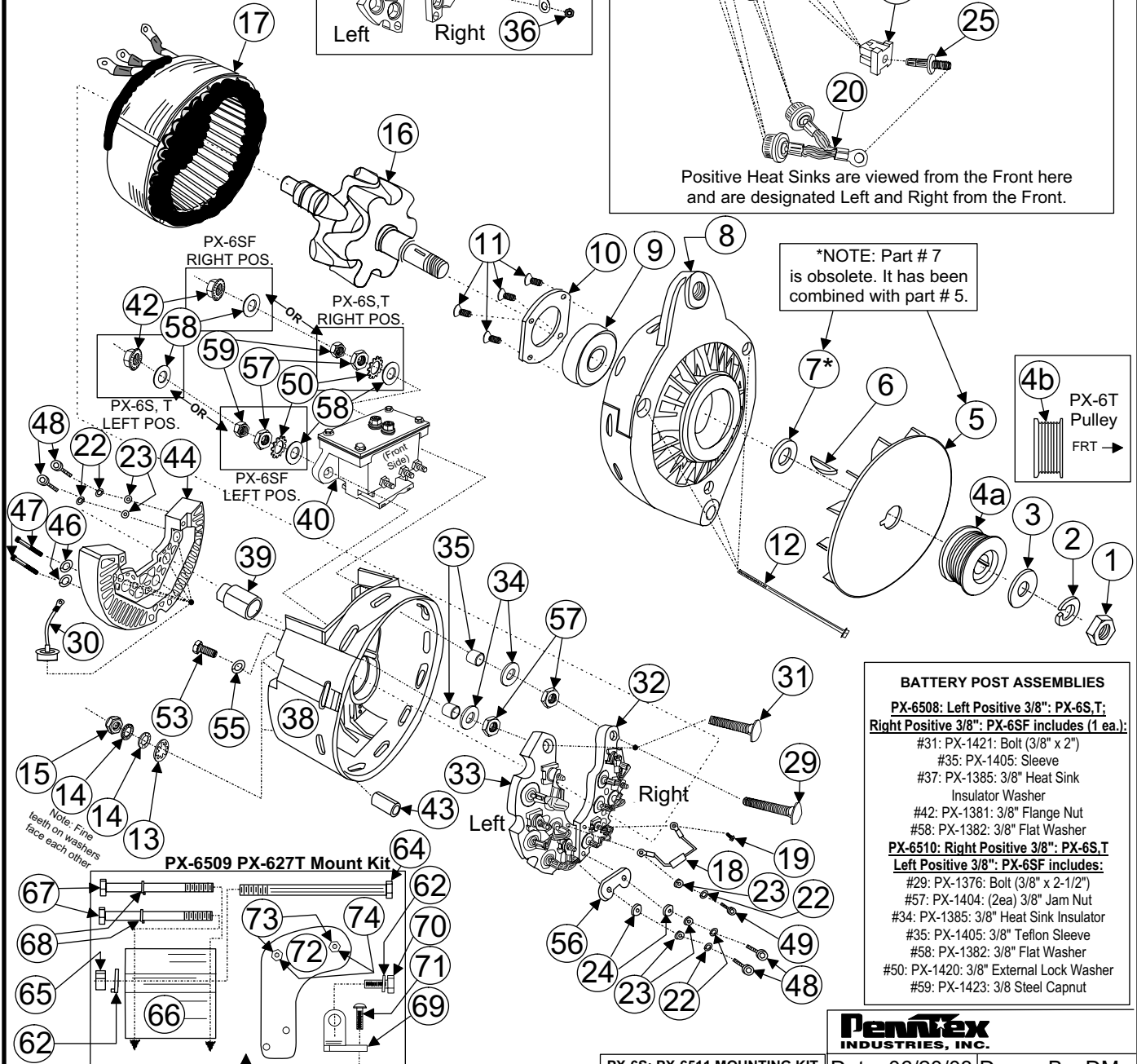
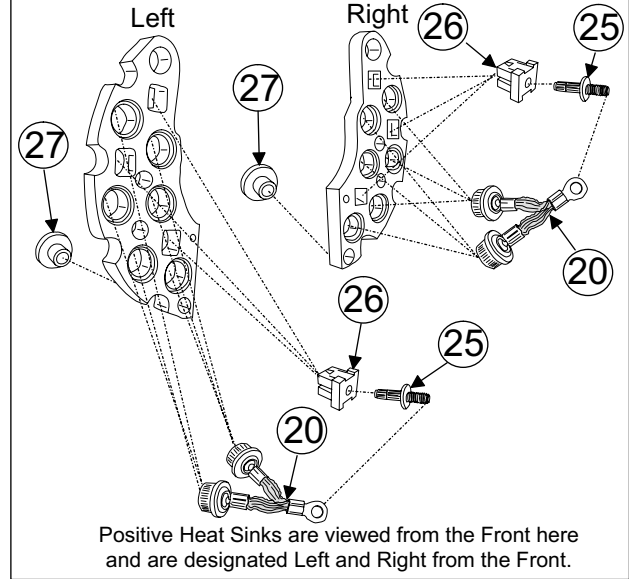
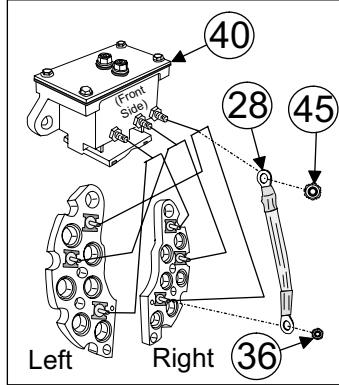
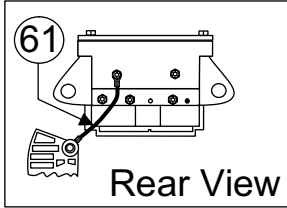
Not to scale

**PENNTEX INDUSTRIES, INC.**  
**PARTS LIST**  
**EARLY PX-627 SERIES**



No.	Part #	Description	Qty.
1	PX-1083	Rotor nut	1
2	PX-1059	Rotor lock washer	1
3	PX-1058	Rotor washer	1
4	PX-1355	2.5" K8 pulley: PX-6S	1
5	PX-1409	Fan	1
6	PX-1080	Woodruff key	1
7	*	Fan spacer (now part of #5)	1
8	PX-1073	Front housing: 6S	1
9	PX-1074	Front bearing	1
10	PX-1075	Front bearing retainer	1
11	PX-1301	Fr. brg. retainer screw	4
12	PX-1364	Thru bolts	3
13	PX-1101	#10 Internal lock washer	3
14	PX-1269	Nord lock washer	6
15	PX-1213	#10 Nylon lock nut	3
16	PX-6501	Rotor	1
17	PX-6503	275 Amp stator	1
18	PX-3514	Capacitor assembly	1
19	PX-1096	Capacitor screw- 8-32 x 3/8" hex	1
20	PX-2512	Positive diode assembly	3
22	PX-1100	#10 lock washer	5
23	PX-1111	#10 flat washer	5
24	PX-1091	Heat sink insulator (top)	2
25	PX-1040	Heat sink stud	6
26	PX-1039	Heat sink stud insulator	6
27	PX-1090	Heat sink insulator (bottom)	2
28	PX-3510	Positive rectifier strap	6
29	PX-1376	3/8" x 2-1/2" right battery post	1
	PX-6510	Bat. post assy. (2-1/2" x 3/8" bolt)	1
30	PX-6502	Negative diode assembly	6
31	PX-1378	5/16" x 2" left battery post	1
32	PX-6504	Right positive heat sink assy.	1
33	PX-6505	Left positive heat sink assy.	1
34	PX-1385	Heat sink insulator washer 3/8"	1
35	PX-1405	Teflon bat. post sleeve, 3/8"	1
36	PX-1099	8-32 keps nut	6
37	PX-1071	Insulating fiber washer	2
38	PX-1375	Rear hsg. (Specify post sizes: 3/8-5/16")	1
39	PX-1081	Rear bearing	1

No.	Part #	Description	Qty.
40	PX-6507	Brush hldr. assy. w/ brushes	1
	PX-1069	Brush***	2
42	PX-1105	5/16" Flange nut	1
43	PX-1372	Rear housing leg spacer	1
44	PX-6506	Negative heat sink w/diodes	1
45	PX-1113	10-32 keps nut	5
46	PX-1104	#14 Lock washer	2
47	PX-1380	1/4"-20 x 1-1/2" SHCS	2
48	PX-1377	10-32 x 1-1/4" SHCS	4
49	PI-0125	Capacitor cap screw	1
50	PX-1420	3/8" external lock washer	2
53	PX-1401	External ground bolt	1
55	PX-1116	5/16" Lock washer	1
56	PX-1386	Pos. heat sink connector	1
57	PX-1404	3/8" Jam nut	2
58	PX1382	3/8" Flat washer	1
59	PX-1423	3/8" Steel cap nut	2
60	PX-1205	Teflon bat. post sleeve 5/16"	1
61	PX-3509	Brush ground lead	1
62	PX-1252	1/2" Lockwasher	2
63	PX-1251	1/2" x 1" Front housing bolt	1
64	PX-1396	1/2" x 7" Mounting bolt	1
65	PX-1253	1/2" Mounting bolt nut	1
<b>*Not available but upgraded. Call factory for replacement parts information.</b>			
<b>***Not shown on drawing.</b>			
PennTex 07-23-2003			



- BATTERY POST ASSEMBLIES**
- PX-6508: Left Positive 3/8": PX-6S,T; Right Positive 3/8": PX-6SF includes (1 ea.):**
- #31: PX-1421: Bolt (3/8" x 2")
  - #35: PX-1405: Sleeve
  - #37: PX-1385: 3/8" Heat Sink Insulator Washer
  - #42: PX-1381: 3/8" Flange Nut
  - #58: PX-1382: 3/8" Flat Washer
- PX-6510: Right Positive 3/8": PX-6S,T Left Positive 3/8": PX-6SF includes:**
- #29: PX-1376: Bolt (3/8" x 2-1/2")
  - #57: PX-1404: (2ea) 3/8" Jam Nut
  - #34: PX-1385: 3/8" Heat Sink Insulator
  - #35: PX-1405: 3/8" Teflon Sleeve
  - #58: PX-1382: 3/8" Flat Washer
  - #50: PX-1420: 3/8" External Lock Washer
  - #59: PX-1423: 3/8 Steel Capnut

- PX-6T Mount Kit: PX-6509**
- #62 PX-1252 Lock Wshr- 2ea.
  - #64 PX-1396 Long Bolt- 1
  - #65 PX-1253 Hex Nut- 1
  - #66 PX-1214 Mount Block- 1
  - #67 PX-6512 Mnt. Blk. Bolt- 2
- PX-6509 PX-627T Mount Kit**
- #68 PX-1277 Lock Washer-2ea.
  - #69 PX-1215 T-angle Brkt- 1
  - #70 PX-1251 Mount Bolt- 1
  - #71 PX-1276 Buttonhd Blt- 1
  - #72 PX-5505 G/P Relay Brkt- 1
  - #73 PX-0158 Brkt. Nut- 2
- PX-6511 MOUNTING KIT**
- #64: PX-1396 Long Bolt 1ea.
  - #62: PX-1252 Lock Washer 2
  - #65: PX-1253 Nut 1
  - #63: PX-1251 Bolt 1
  - #53: PX-1401 Ground Bolt 1
  - #55: PX-1116 5/16" Washer 1
- #74 PX-1104 G/P Brkt. Washer- 2ea.

**PennTex**  
INDUSTRIES, INC.

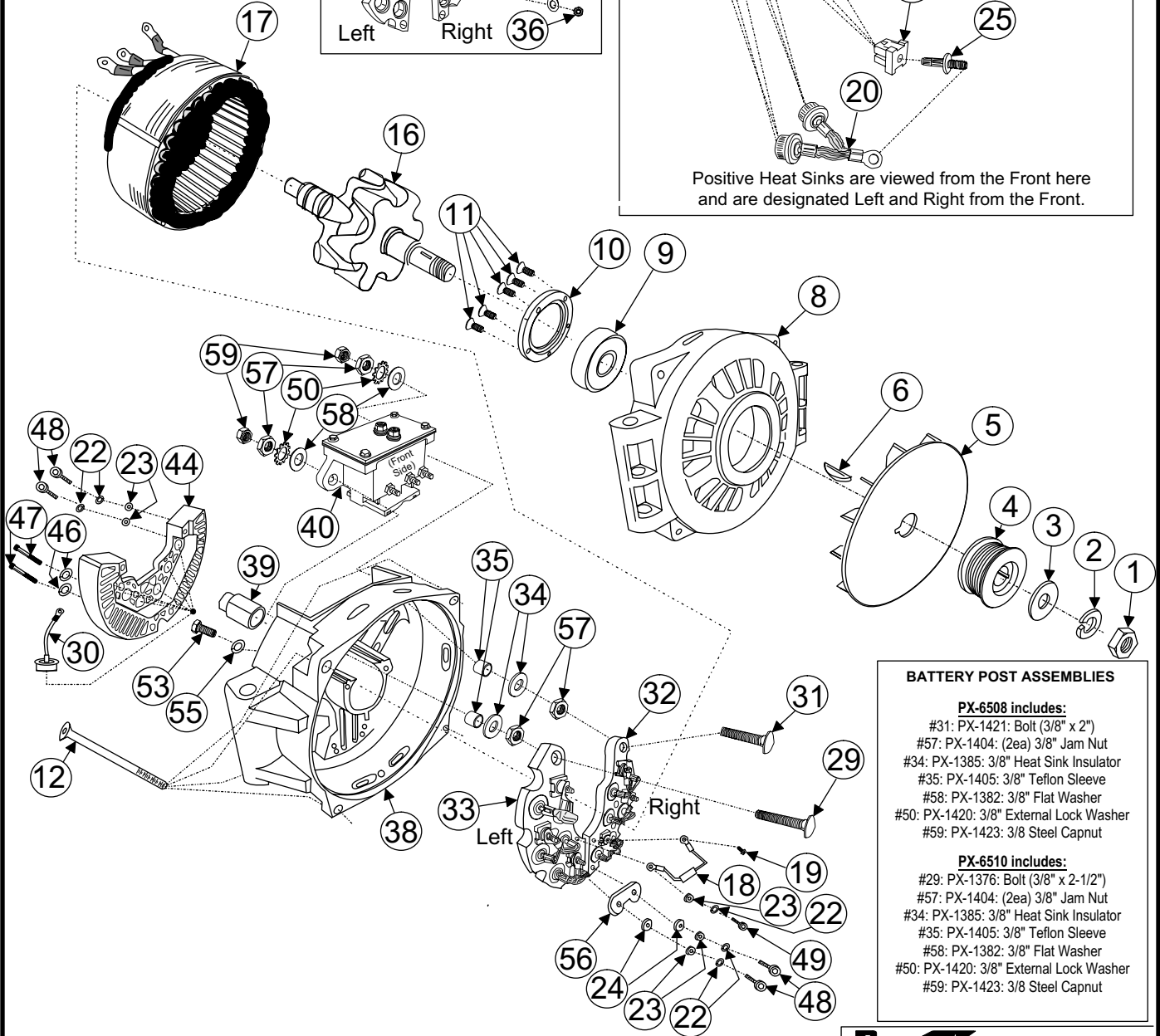
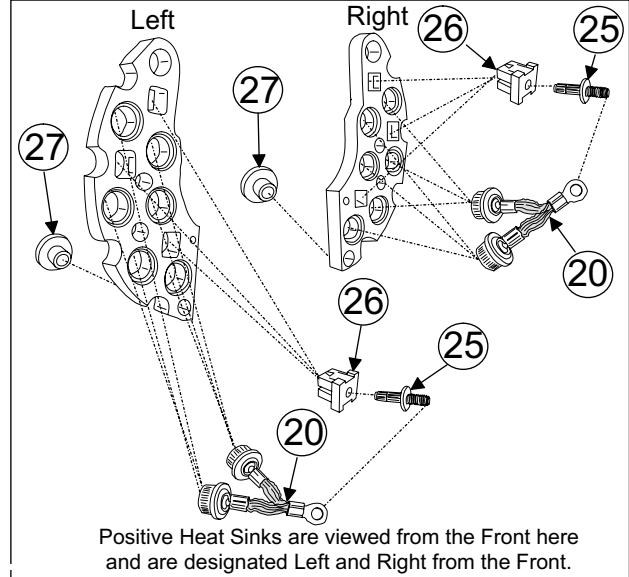
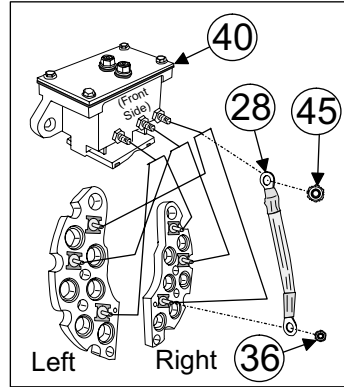
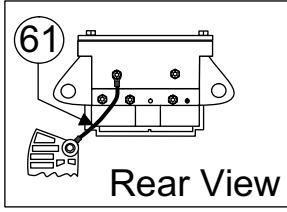
Date: 06/20/03 | Drawn By: DMc

Late PX-627 from Serial # 10023542 to present

Not to scale







- BATTERY POST ASSEMBLIES**
- PX-6508 includes:**  
 #31: PX-1421: Bolt (3/8" x 2")  
 #57: PX-1404: (2ea) 3/8" Jam Nut  
 #34: PX-1385: 3/8" Heat Sink Insulator  
 #35: PX-1405: 3/8" Teflon Sleeve  
 #58: PX-1382: 3/8" Flat Washer  
 #50: PX-1420: 3/8" External Lock Washer  
 #59: PX-1423: 3/8 Steel Capnut
- PX-6510 includes:**  
 #29: PX-1376: Bolt (3/8" x 2-1/2")  
 #57: PX-1404: (2ea) 3/8" Jam Nut  
 #34: PX-1385: 3/8" Heat Sink Insulator  
 #35: PX-1405: 3/8" Teflon Sleeve  
 #58: PX-1382: 3/8" Flat Washer  
 #50: PX-1420: 3/8" External Lock Washer  
 #59: PX-1423: 3/8 Steel Capnut

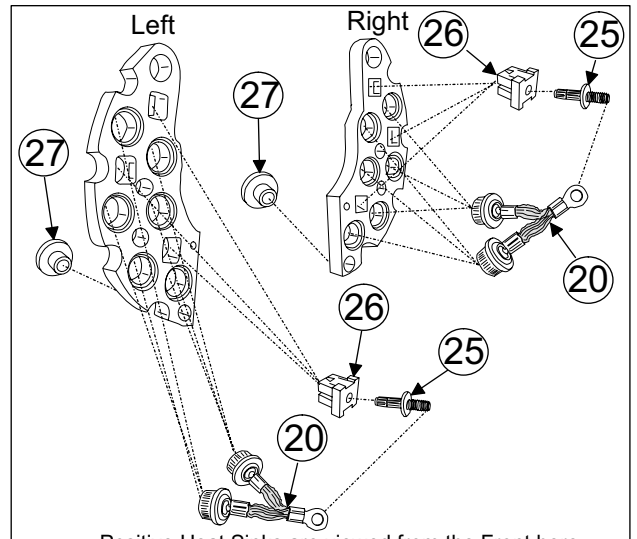
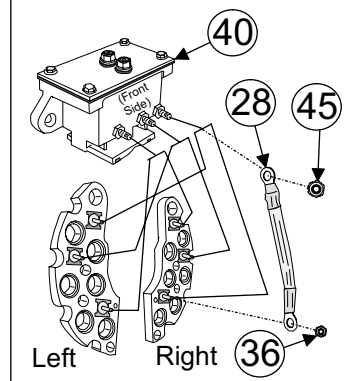
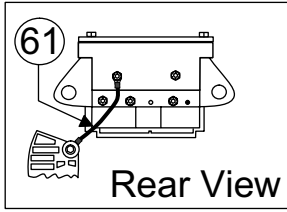
PENNTEX INDUSTRIES, INC.

**PARTS LIST  
PX-627Q SERIES**

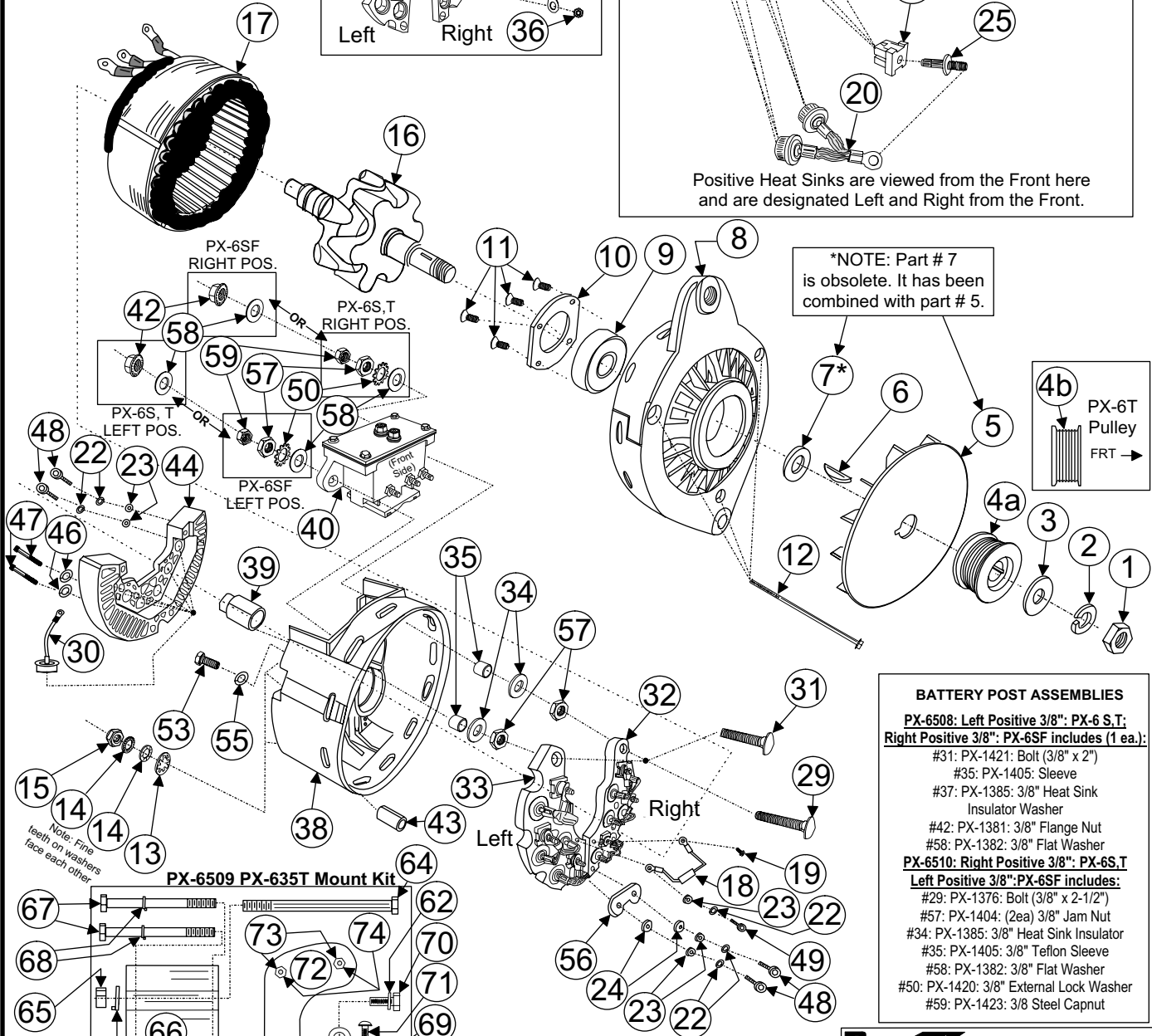


No.	Part #	Description	Qty.
1	PX-1083	Rotor nut	1
2	PX-1059	Rotor lock washer	1
3	PX-1058	Rotor washer	1
4	****	pulley	
5	PX-1409	Fan	1
6	PX-1080	Woodruff key	1
8	PX-6536	Front housing: 6Q	1
9	PX-1074	Front bearing	1
10	PX-6539	Front bearing retainer	1
11	PX-1301	Fr. brg. retainer screw	5
12	PX-6538	Thru bolts (1/4-20 x 3-1/2 FHCS)	4
16	PX-6501	Rotor	1
17	PX-6503	275 Amp stator	1
18	PX-3514	Capacitor assembly	1
19	PX-1096	Capacitor screw- 8-32 x 3/8" hex	1
20	PX-2512	Positive diode assembly	3
22	PX-1100	#10 lock washer	5
23	PX-1111	#10 flat washer	5
24	PX-1091	Heat sink insulator (top)	2
25	PX-1040	Heat sink stud	6
26	PX-1039	Heat sink stud insulator	6
27	PX-1090	Heat sink insulator (bottom)	2
28	PX-3510	Positive rectifier strap	6
29	PX-1376	3/8" x 2-1/2" battery post	1
30	PX-6502	Negative diode assembly	6
31	PX-1421	3/8" x 2" battery post	1
32	PX-6504	Right positive heat sink assy.	1
33	PX-6505	Left positive heat sink assy.	1
34	PX-1385	Heat sink insulator washer	2
35	PX-1405	Teflon bat. post sleeve, 3/8"	2
36	PX-1099	8-32 keps nut	6
38	PX-6537	Rear housing: 6Q	1
39	PX-1081	Rear bearing	1
40	PX-3517	Brush hldr assy. w/ brushes	1
	PX-1069	Brush***	2
44	PX-6506	Negative heat sink w/diodes	1
45	PX-1113	10-32 keps nut	5
46	PX-1104	#14 Lock washer	2
47	PX-1380	1/4"-20 x 1-1/2" SHCS	2

No.	Part #	Description	Qty.
48	PX-1377	10-32 x 1-1/4" SHCS	4
49	PI-0125	Capacitor cap screw	1
50	PX-1420	3/8" external lock washer	2
53	PX-1401	External ground bolt	1
55	PX-1116	5/16" Lock washer	1
56	PX-1386	Pos. heat sink connector	1
57	PX-1404	3/8" Jam nut	4
58	PX1382	3/8" Flat washer	2
59	PX-1423	3/8" Steel cap nut	2
61	PX-3509	Brush ground lead	1
	PX-6508	Bat. post assy. (2" x 3/8" bolt)	1
	PX-6510	Bat. post assy. (2-1/2" x 3/8" bolt)	1
<b>***Not shown on drawing.</b>			
<b>**** Currently uses engine mfg. pulley.</b>			
PennTex 07-17-2003			



Positive Heat Sinks are viewed from the Front here and are designated Left and Right from the Front.



**PennTex**  
INDUSTRIES, INC.  
Date: 10/23/03 Drawn By: DMc

PX-635 Not to scale

PENNTEX INDUSTRIES, INC.

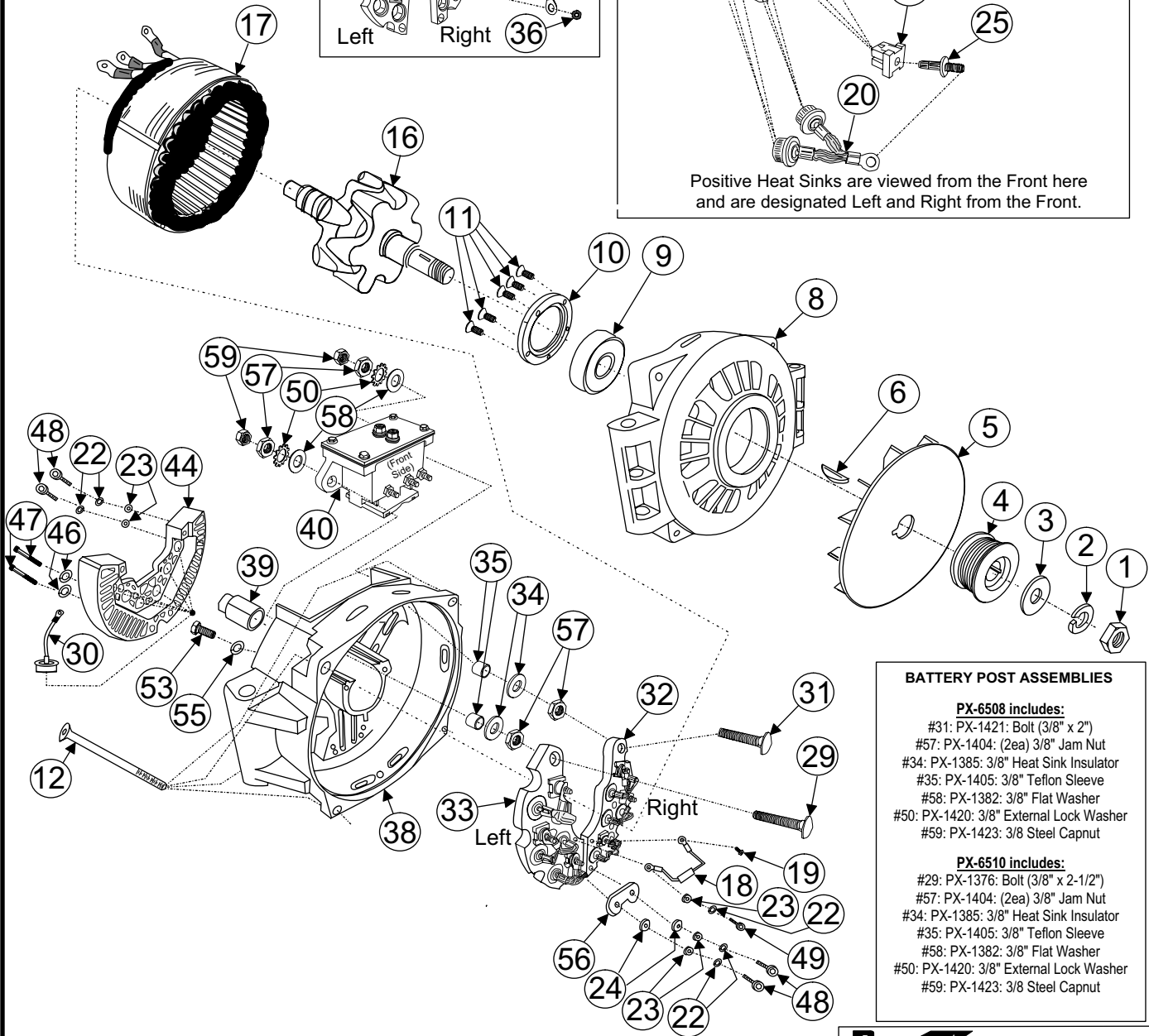
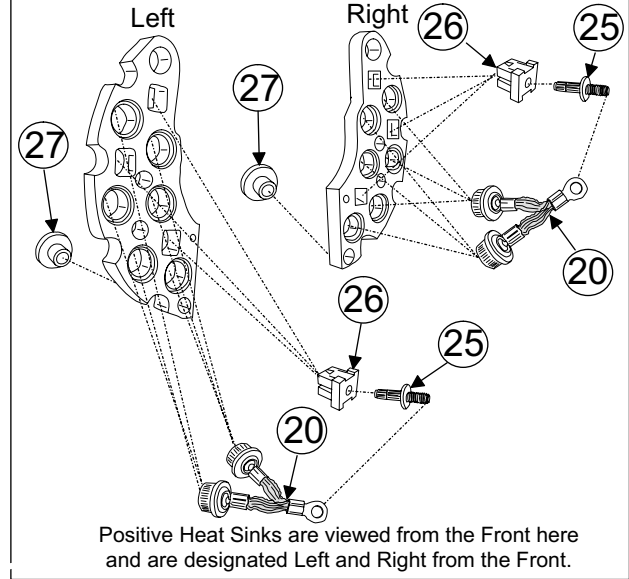
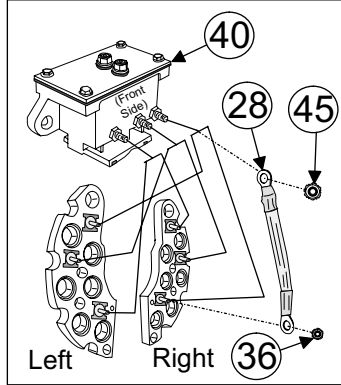
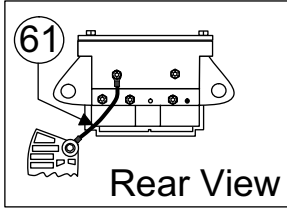
PARTS LIST

PX-635 SERIES NOT INCLUDING PX-635Q



No.	Part #	Description	Qty.
1	PX-1083	Rotor nut	1
2	PX-1059	Rotor lock washer	1
3	PX-1058	Rotor washer	1
4a	PX-1355	2.5" K8 pulley: PX-6S	1
4b	PX-1238	2.2" K8 pulley: PX-6T	1
5	PX-1409	Fan	1
6	PX-1080	Woodruff key	1
8	PX-1073	Front housing: 6S, 6T	1
9	PX-1074	Front bearing	1
10	PX-1075	Front bearing retainer	1
11	PX-1301	Frnt. brg. retainer screw	4
12	PX-1364	Thru bolts	3
13	PX-1101	#10 Internal lock washer	3
14	PX-1269	Nord lock washer	6
15	PX-1213	#10 Nylon lock nut	3
16	PX-6501	Rotor	1
17	PX-6513	350 Amp stator	1
18	PX-3514	Capacitor assembly	1
19	PX-1096	Capacitor screw- 8-32 x 3/8" hex	1
20	PX-2512	Positive diode assembly	3
22	PX-1100	#10 lock washer	5
23	PX-1111	#10 flat washer	5
24	PX-1091	Heat sink insulator (top)	2
25	PX-1040	Heat sink stud	6
26	PX-1039	Heat sink stud insulator	6
27	PX-1090	Heat sink insulator (bottom)	2
28	PX-3510	Positive rectifier strap	6
29	PX-1376	3/8" x 2-1/2" battery post	1
	PX-6510	Bat. post assembly (2-1/2" x 3/8" bolt)	1
30	PX-6502	Negative diode assembly	6
31	PX-1421	3/8" x 2" battery post	1
	PX-6508	Bat. post assy. (2" x 3/8" bolt)	1
32	PX-6504	Right positive heat sink assy.	1
33	PX-6505	Left positive heat sink assy.	1
34	PX-1385	Heat sink insulator washer	2
35	PX-1405	Teflon bat. post sleeve, 3/8"	2
36	PX-1099	8-32 keps nut	6
38	PX-1375	Rear hsg. 6S, 6T (Replaces PX-1082)	1
39	PX-1081	Rear bearing	1

No.	Part #	Description	Qty.
40	PX-3517	Brush hldr assy. w/ brushes	1
	PX-1069	Brush***	2
43	PX-1372	Rear housing leg spacer	1
44	PX-6506	Negative heat sink w/diodes	1
45	PX-1113	10-32 keps nut	5
46	PX-1104	#14 Lock washer	2
47	PX-1380	1/4"-20 x 1-1/2" SHCS	2
48	PX-1377	10-32 x 1-1/4" SHCS	4
49	PI-0125	Capacitor cap screw	1
50	PX-1420	3/8" external lock washer	2
53	PX-1401	External ground bolt	1
55	PX-1116	5/16" Lock washer	1
56	PX-1386	Pos. heat sink connector	1
57	PX-1404	3/8" Jam nut	2
58	PX1382	3/8" Flat washer	2
59	PX-1423	3/8" Steel cap nut	2
61	PX-3509	Brush ground lead	1
62	PX-1252	1/2" Lockwasher	2
64	PX-1396	1/2" x 7" Mounting bolt	1
65	PX-1253	1/2" Mounting bolt nut	1
66	px-1214	Mount block	1
67	PX-6512	Mount block bolt	2
68	PX-1277	Lock washer	2
69	PX-1215	T-angle bracket	1
70	PX-1251	Mount bolt	1
71	PX-1276	Button head bolt	1
72	PX-5505	Glow plug relay relocation brkt.	1
73	PX-0158	Glow plug bracket nut	2
74	PX-1104	Glow plug bracket washer	2
	PX-6509	PX-635T mount kit	1
<b>***Not shown on drawing.</b>			
PennTex 08-06-2003			



- BATTERY POST ASSEMBLIES**
- PX-6508 includes:**
- #31: PX-1421: Bolt (3/8" x 2")
  - #57: PX-1404: (2ea) 3/8" Jam Nut
  - #34: PX-1385: 3/8" Heat Sink Insulator
  - #35: PX-1405: 3/8" Teflon Sleeve
  - #58: PX-1382: 3/8" Flat Washer
  - #50: PX-1420: 3/8" External Lock Washer
  - #59: PX-1423: 3/8 Steel Capnut
- PX-6510 includes:**
- #29: PX-1376: Bolt (3/8" x 2-1/2")
  - #57: PX-1404: (2ea) 3/8" Jam Nut
  - #34: PX-1385: 3/8" Heat Sink Insulator
  - #35: PX-1405: 3/8" Teflon Sleeve
  - #58: PX-1382: 3/8" Flat Washer
  - #50: PX-1420: 3/8" External Lock Washer
  - #59: PX-1423: 3/8 Steel Capnut

PENNTEX INDUSTRIES, INC.

**PARTS LIST  
PX-635Q SERIES**



No.	Part #	Description	Qty.
1	PX-1083	Rotor nut	1
2	PX-1059	Rotor lock washer	1
3	PX-1058	Rotor washer	1
4	****	pulley	
5	PX-1409	Fan	1
6	PX-1080	Woodruff key	1
8	PX-6536	Front housing: 6Q	1
9	PX-1074	Front bearing	1
10	PX-6539	Front bearing retainer	1
11	PX-1301	Fr. brg. retainer screw	5
12	PX-6538	Thru bolts (1/4-20 x 3-1/2" FHCS)	4
16	PX-6501	Rotor	1
17	PX-6513	350 Amp stator	1
18	PX-3514	Capacitor assembly	1
19	PX-1096	Capacitor screw- 8-32 x 3/8" hex	1
20	PX-2512	Positive diode assembly	3
22	PX-1100	#10 lock washer	5
23	PX-1111	#10 flat washer	5
24	PX-1091	Heat sink insulator (top)	2
25	PX-1040	Heat sink stud	6
26	PX-1039	Heat sink stud insulator	6
27	PX-1090	Heat sink insulator (bottom)	2
28	PX-3510	Positive rectifier strap	6
29	PX-1376	3/8" x 2-1/2" battery post	1
30	PX-6502	Negative diode assembly	6
31	PX-1421	3/8" x 2" battery post	1
32	PX-6504	Right positive heat sink assy.	1
33	PX-6505	Left positive heat sink assy.	1
34	PX-1385	Heat sink insulator washer	2
35	PX-1405	Teflon bat. post sleeve, 3/8"	2
36	PX-1099	8-32 keps nut	6
38	PX-6537	Rear housing: 6Q	1
39	PX-1081	Rear bearing	1
40	PX-3517	Brush hldr assy. w/ brushes	1
	PX-1069	Brush***	2
44	PX-6506	Negative heat sink w/diodes	1
45	PX-1113	10-32 keps nut	5
46	PX-1104	#14 Lock washer	2
47	PX-1380	1/4"-20 x 1-1/2" SHC screw	2

No.	Part #	Description	Qty.
48	PX-1377	10-32 x 1-1/4" SHCS	4
49	PI-0125	Capacitor cap screw	1
50	PX-1420	3/8" external lock washer	2
53	PX-1401	External ground bolt	1
55	PX-1116	5/16" Lock washer	1
56	PX-1386	Pos. heat sink connector	1
57	PX-1404	3/8" Jam nut	4
58	PX1382	3/8" Flat washer	2
59	PX-1423	3/8" Steel cap nut	2
61	PX-3509	Brush ground lead	1
	PX-6508	Bat. post assy. (2" x 3/8" bolt)	1
	PX-6510	Bat. post assy. (2-1/2" x 3/8" bolt)	1
<b>***Not shown on drawing.</b>			
<b>**** Currently uses engine mfg. pulley.</b>			
PennTex 07-17-2003			

**FRONT HOUSINGS**



**PX-1024**  
PX-115P Front Housing



**PX-1320**  
PX-170P Front Housing



**PX-1399**  
PX-170P Front Housing  
6/12 Frt. Housing



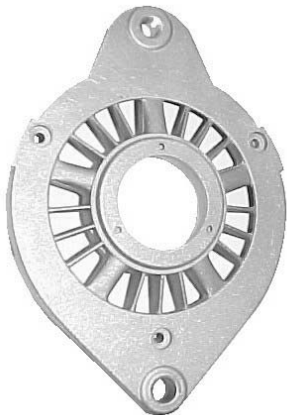
**PX-1051**  
PX-2P & 5P Front Housing  
3" foot, 7/16" bushing



**PX-1123**  
PX-2P2 & 5P2 Front Housing  
2" foot, 10mm bushing



**PX-1246**  
PX-2 & 2RL Front Housing  
Both mount holes are 8mm



**PX-1073**  
PX-3 & PX-6 Front Housing



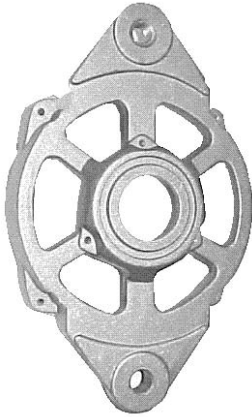
**PX-1348**  
PX-4G & 5G Front Housing  
S# 799155 to present



**PX-1264**  
PX-4CS Front Housing



**FRONT HOUSINGS**



**PX-1184**  
PX-4S Front Housing  
Both mount holes threaded



**PX-1411**  
PX-2R-5A & PX-5R Frt. Housing  
Both mount holes are 7/16"



**PX-1122**  
PX-2T & 5T Front Housing



**PX-6536**  
PX-6Q Front Housing

**REAR HOUSINGS**



PX-2/4 rear housing is shorter in rear bearing area than a PX-5. Uses PX-1025 bearing.

**PX-1124**  
PX-2 & 4 Rear Housing

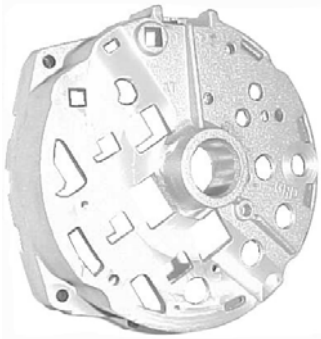


PX-1124-T rear housing is milled out in this area to clear intake manifold water passage.

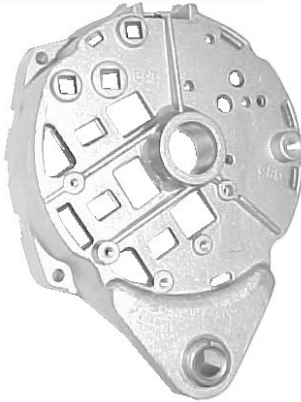
**PX-1124-T**  
PX-2R/RL Rear Housing  
Used on '96-'03 4.6 V-8 Fords



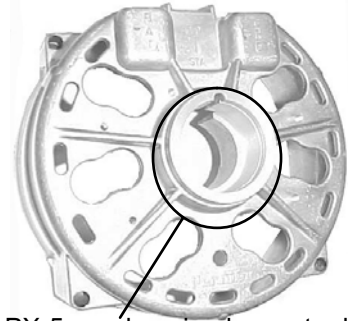
**PX-1375**  
PX-3 & 6 Rear Housing



**PX-1313**  
PX-4CS Rear Housing

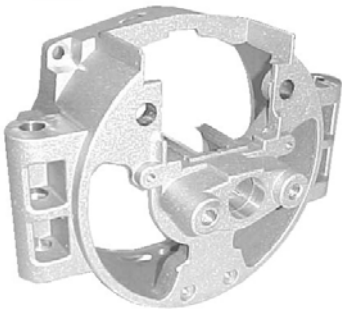


**PX-1263**  
PX-4S Rear Housing



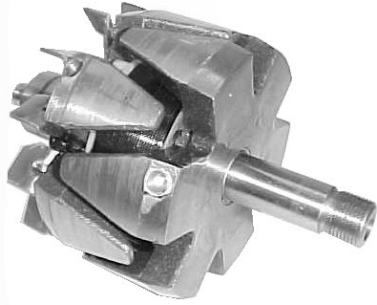
PX-5 rear housing has extra lip for rear bearing that PX-2 doesn't. PX-5 rear uses wider PX-1074 rear bearing and rotor is longer than PX-2.

**PX-1292**  
PX-5 Rear Housing

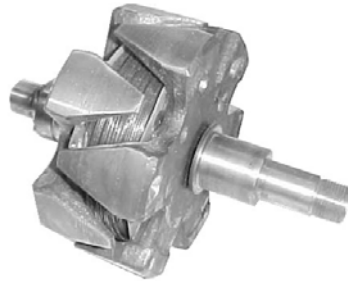


**PX-6537**  
PX-6Q Rear Housing

**ROTORS**



**PX-1026**  
PX-1 Series Rotor  
(only PennTex rotor  
with a fan attached)



**PX-1055**  
Late PX-2 & PX-4G-5  
Series Rotor



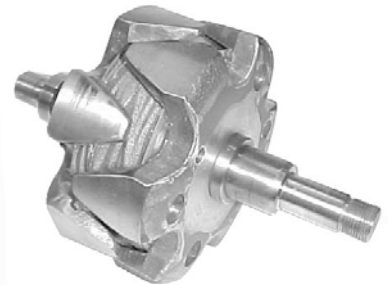
**PX-1077**  
PX-3 Series Rotor



**PX-1266**  
PX-4CS & Early PX-4G Rotor



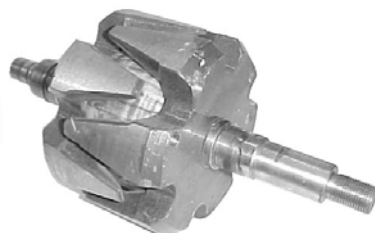
**PX-1187**  
PX-4S Rotor



**PX-1300**  
All PX-5 Series Rotor



**PX-6501**  
All PX-6 Series using  
12-volt rotors



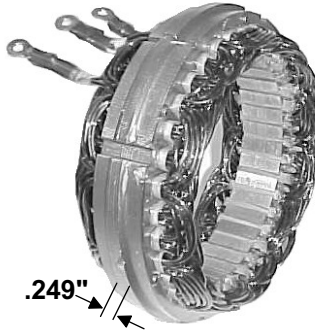
**PX-6524**  
All PX-6 Series using  
24-volt rotors

Dimension is the average uncompressed width of the center ridge of the stator

.837"



**PX-1503**  
PX-1 Series Stator



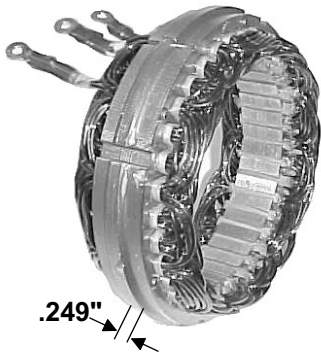
.249"

**PX-2503-1L**  
PX-2 Stator with 1/4" longer leads for early flat heat sinks



.249"

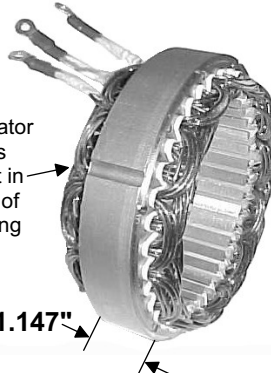
**PX-2503-3**  
PX-2, PX-4 Stator  
Externally Rectified



.249"

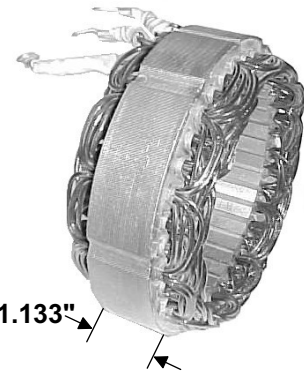
**PX-2503-5**  
PX-2, 4G--5 models  
200 amp Stator

PX-3 stator only has one slot in outside of stator ring



1.147"

**PX-3503-1**  
PX-3 200 amp Stator



1.133"

**PX-4503**  
PX-4CS & S 200 amp Stator



1.145"

**PX-1299-1**  
PX-5 200 amp Stator



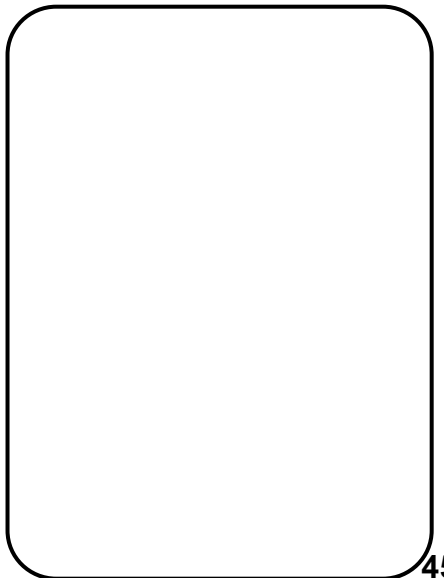
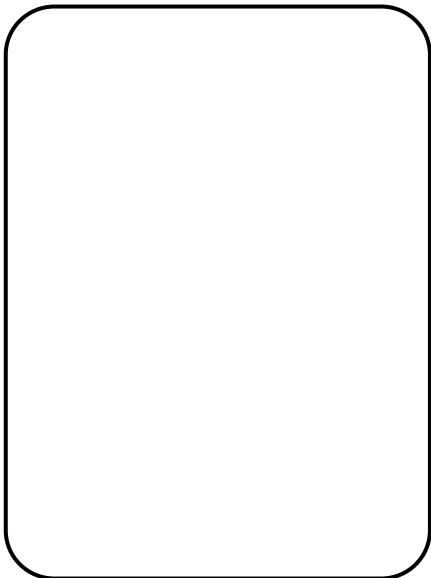
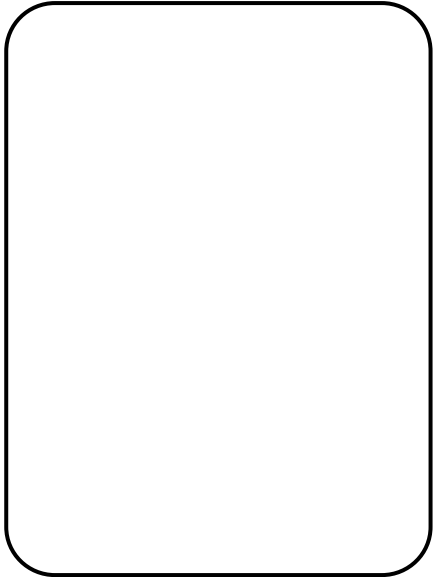
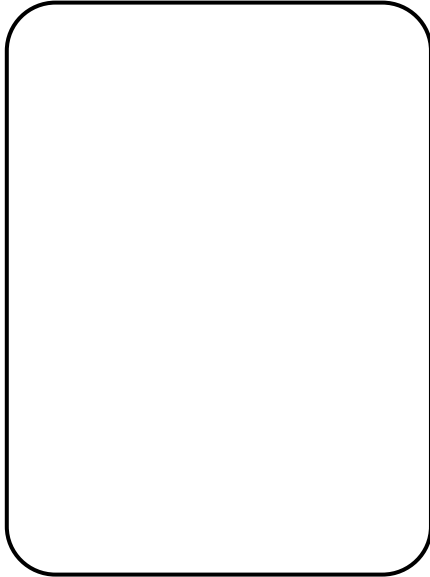
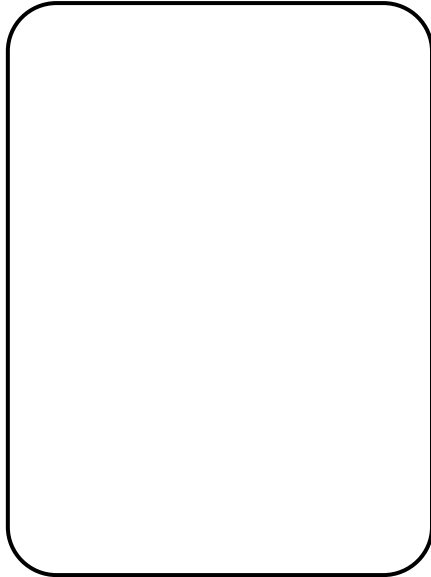
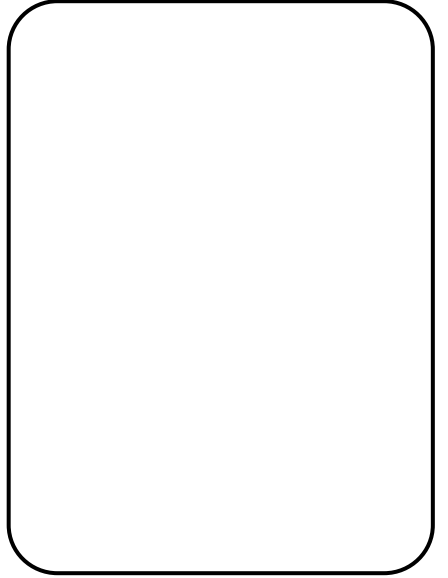
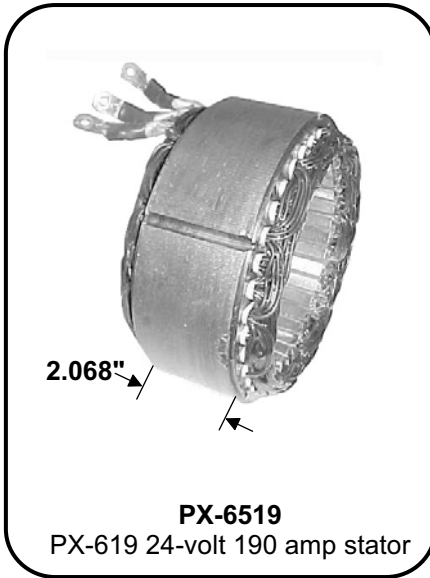
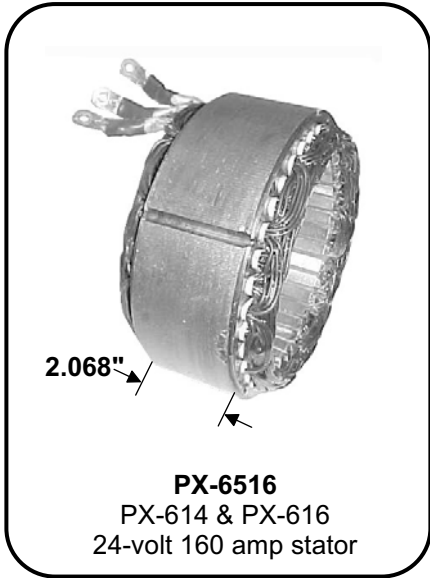
1.145"

**PX-1299-3**  
PX-5 Externally Rectified Stator



2.068"

**PX-6503**  
All PX-6 Series  
using 12-volt stators

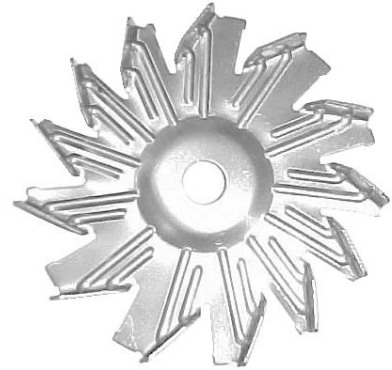




**PX-1057**  
PX-2 & 5 Series Fan  
.057" thick, 5.687" OD



**PX-1189**  
PX-4S Fan



**PX-1265**  
PX-4CS & 4G Series Fan  
.094" thick

**ALL PARTS ON THIS PAGE ARE VIEWED FROM THE BACK SIDE**



**PX-1409**  
PX-3 & 6 Series Fan



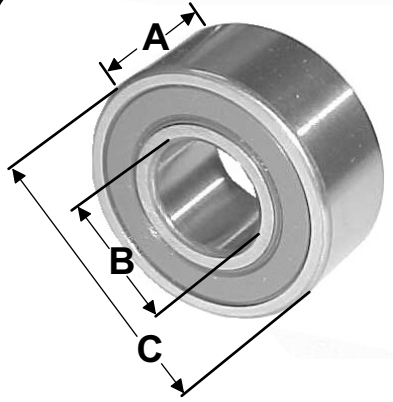
**PX-2538**  
160 mm Fan Baffle  
(Use only with PX-1128 pulley designed for extra thickness of this baffle).




**PX-4522**  
146 mm Fan Baffle  
(Use only with PX-1128 pulley designed for extra thickness of this baffle).

**ALL PARTS ON THIS PAGE ARE VIEWED FROM THE BACK SIDE**

**BEARINGS**



**PX-1025**  
PX-1 & 4CS Frt Brg.  
PX-2, 4 & 5 Rear Brg.  
A: .470", B: .668", C: 1.574"



**PX-1034**  
PX-1 Rear Bearing  
A: .392", B: .392", C: 1.023"



**PX-1052**  
PX-4S Front Bearing  
A: .668", B: .980", C: 2.440"




**PX-1062**  
Very early series  
PX-1, 2 Rear Bearing  
A: .810", C: .939"



**PX-1074**  
PX-2,3,4,5,&6 Front Bearing  
A: .998", B: .983", C: 2.439"



**PX-1081**  
PX-3, 4CS, 6 Rear Bearing  
A: 1.238", C: .938"

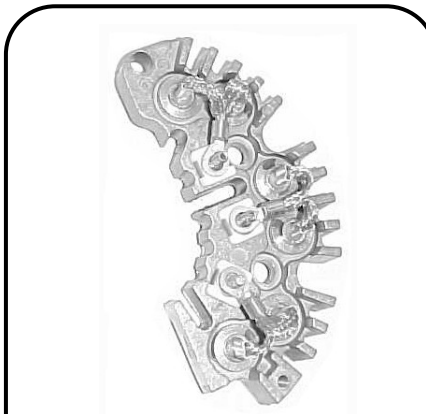


**PX-1291**  
PX-5 Rear Bearing  
A: .687", B: .668", C: 1.574"

**HEAT SINKS**



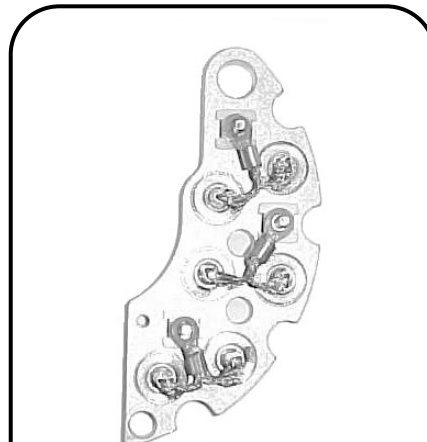
**PX-1504**  
PX-1 Heat Sink Assembly



**PX-2504**  
PX-2, 4G & 5 Positive  
Heat Sink Assembly



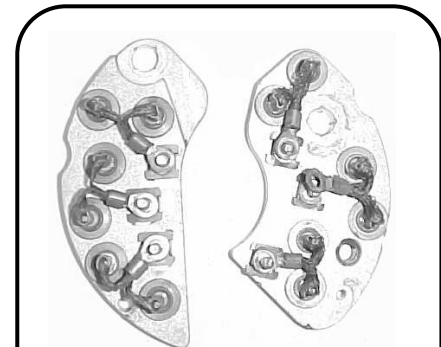
**PX-2505**  
PX-2, 4G & 5 Negative  
Heat Sink Assembly



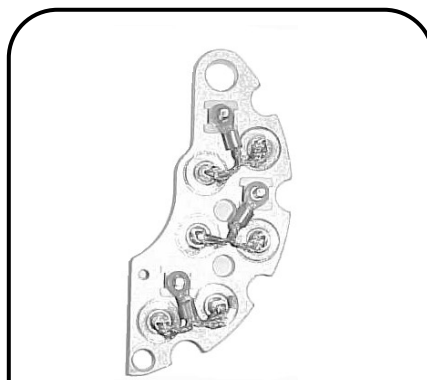
**PX-3504**  
PX-3, PX-622 Positive  
Heat Sink Assembly



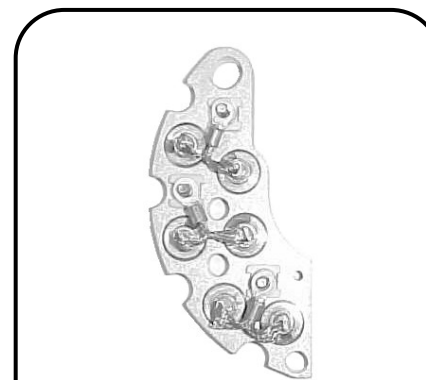
**PX-3505**  
PX-3, PX-622 Negative  
Heat Sink Assembly



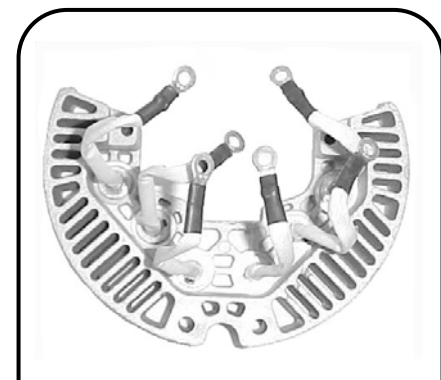
Left: **PX-4505**  
PX-4CS & 4S Negative  
Heat Sink Assembly  
Right: **PX-4504**  
PX-4CS & 4S Positive  
Heat Sink Assembly



**PX-6504**  
All PX-627, PX-635  
Right Positive  
Heat Sink Assembly  
with 3/8" hole



**PX-6505**  
Late PX-627, PX-635  
Left Positive  
Heat Sink Assembly  
with 3/8" hole



**PX-6506**  
PX-627, PX-635  
Rear Negative  
Heat Sink Assembly





**PX-1128**  
PX-4G-5, PX-5G 2.3" K6 Pulley  
Use with PX-4522 Baffle Plate



**PX-1129**  
PX-2R, PX-5R:2002-up,  
PX-2P, PX-2P2,  
PX-5P, PX5P2, 2.3" K6 Pulley



**PX-1130**  
PX-2R, PX-2T, PX-5R, PX-5T  
2.3" K8 Pulley



**PX-1131**  
PX-4S 2.5" K8 Pulley



**PX-1155**  
PX-2P2 2.35" K7 Dodge Pulley



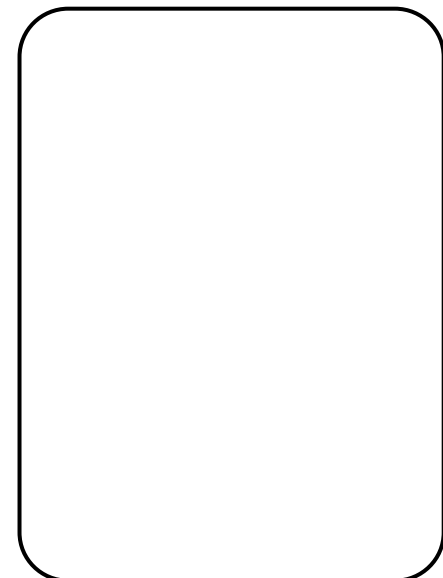
**PX-1238**  
PX-6T 2.2" K8 Pulley



**PX-1353**  
PX-2RL-5 2.0" K6 Pulley



**PX-1355**  
PX-3, PX-6S 2.5" K8 Pulley



**BRACKET KITS**



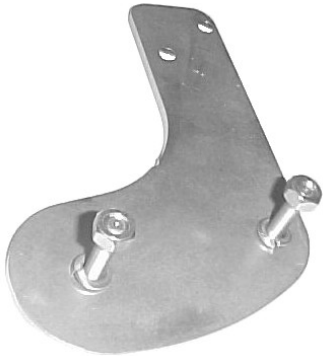
**PX-3600**  
Dodge 360 with PX-220P2



**PX-5503**  
Chevy 1998-2001 6.5 P  
chassis with PX-520P2.  
Comes with PX-1359 K-6 belt.



**PX-5504**  
Chevy 1998-2000 7400  
P-chassis with PX-520P2.  
Requires PX-1358 belt



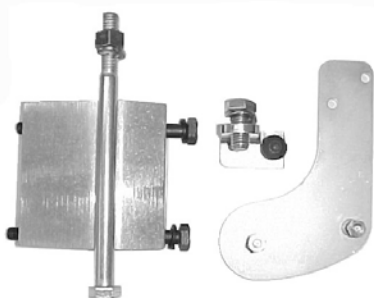
**PX-5505**  
Ford 2000-01 7.3L glow plug  
relay relocation bracket



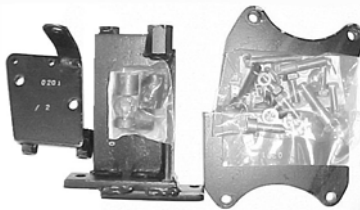
**PX-1258**  
Ford 1997-2001 5.4 & 6.8  
Alt. support bracket



**PX-1335**  
Ford/ Lincoln  
4.6 V-8 alt support bracket



**PX-6509**  
Ford 7.3 Diesel F-450  
& van with PX-627



**PX-2517-3**  
Ford 1997-2001  
6.8 V-10 E-350 van with PX-520R  
K-8 belt included  
**PX-2517-4**  
Ford 1997-up  
6.8 BTN Chassis with PX-520R  
K-6 belt included



**PX-2535**  
PennTex Custom  
fan guard. Fits most PX-2T  
and PX-5T applications

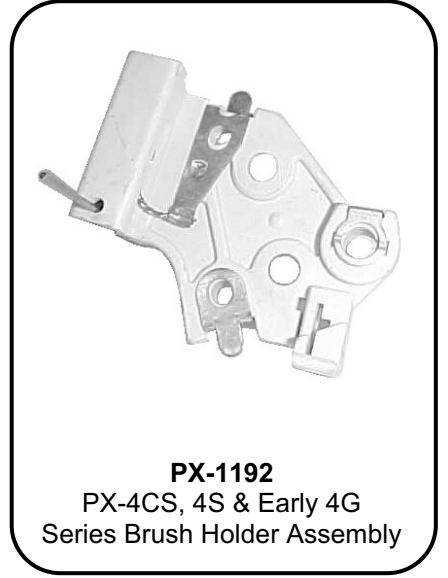
**BRUSH ASSEMBLIES**



**PX-1512**  
PX-1 Series Brush Holder



**PX-2506**  
PX-2, Late PX-4G & PX-5  
Series Brush Holder Assembly



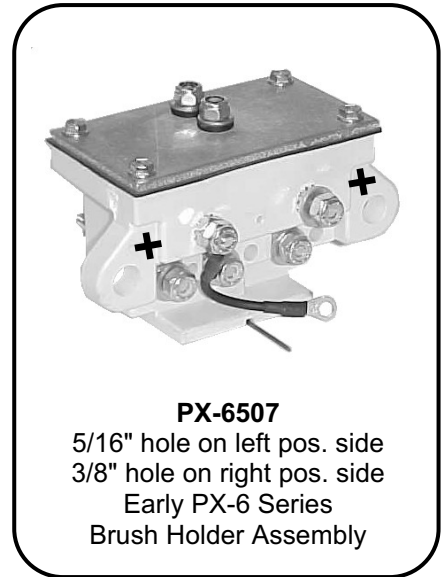
**PX-1192**  
PX-4CS, 4S & Early 4G  
Series Brush Holder Assembly



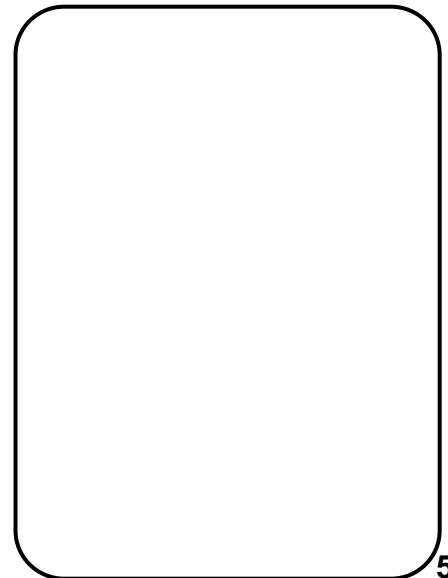
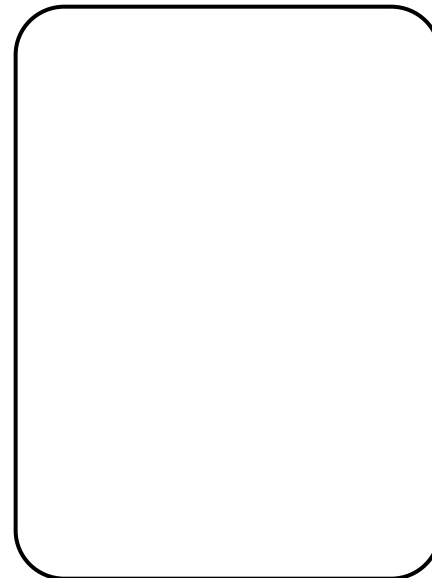
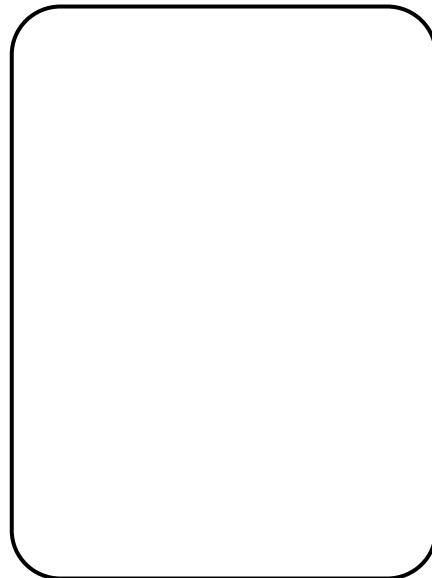
**PX-3517**  
3/8" holes in both sides  
Late PX-3 & PX-6  
Series Brush Holder Assembly



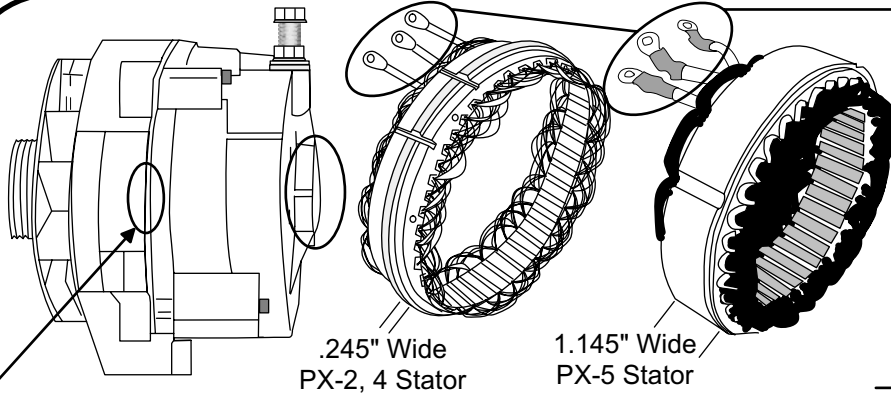
**PX-3506**  
5/16" hole on negative side  
3/8" hole on positive side  
Early PX-3 Series  
Brush Holder Assembly



**PX-6507**  
5/16" hole on left pos. side  
3/8" hole on right pos. side  
Early PX-6 Series  
Brush Holder Assembly



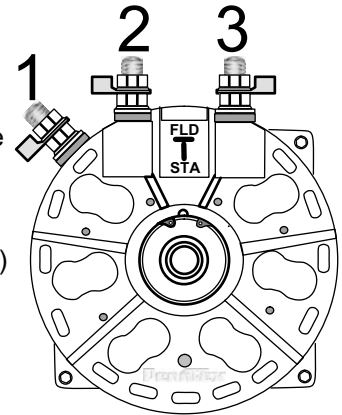
### ALTERNATOR INFO PAGE



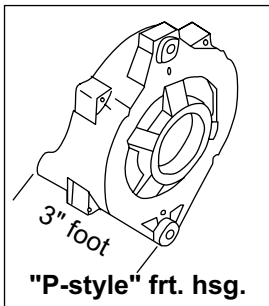
If the PX-2,4,5 alternator you are building still uses the old FLAT heat sinks, make sure your replacement stator part # ends with the letter "L" for "Long" (example: PX-2503-1L). Stator leads on a stator used with later finned heat sinks will be shorter. Stators are NOT interchangeable between flat and finned heat sink models.

Side of a PX-4G-5 alternator. Note that only a little (.245") of the stator is visible between the cases. The PX-5 alternator uses the same front housing and a similar rear housing as the PX-2/ PX-4. The PX-5 stator is almost an inch wider between the cases than the PX-2/ PX-4 stator. A PX-5 alternator is also longer in the rear bearing area as it uses a wider rear bearing than the PX-2/PX-4.

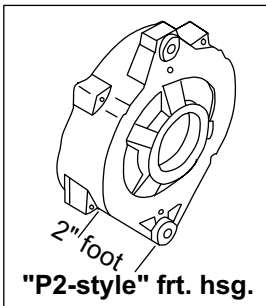
3 studs means alternator is Externally Rectified



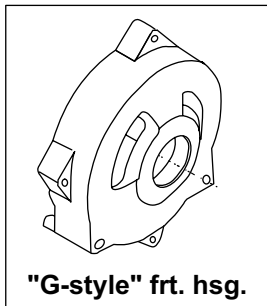
Extra Positive Stud (All 3 are positive)



"P-style" frt. hsg.



"P2-style" frt. hsg.



"G-style" frt. hsg.

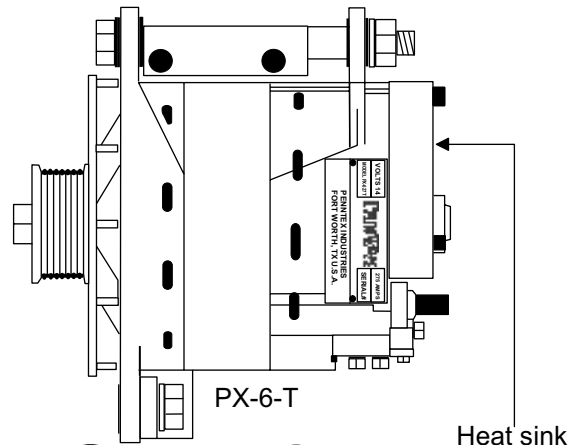


"R-style" frt. hsg.



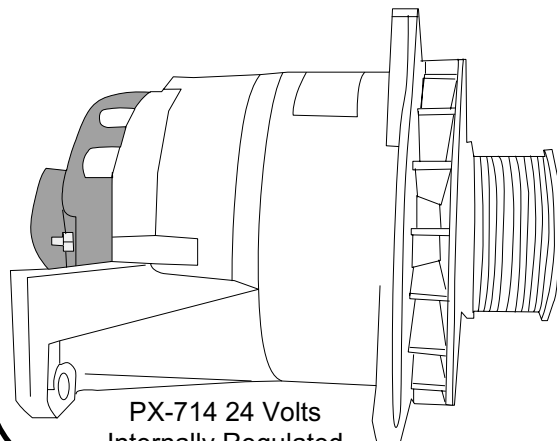
"T-style" frt. hsg.

DRAWINGS NOT TO SCALE

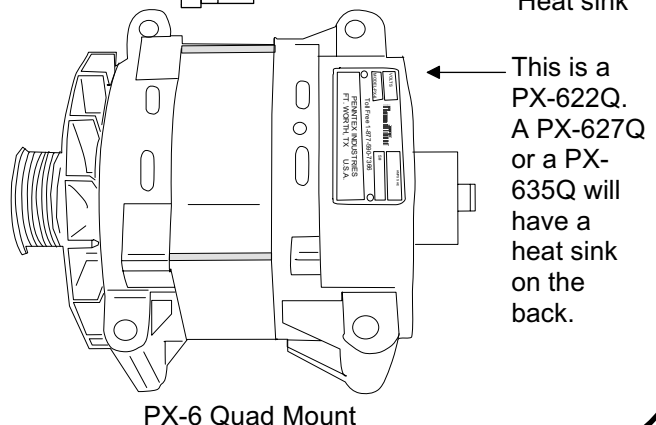


PX-6-T

Heat sink



PX-714 24 Volts Internally Regulated



PX-6 Quad Mount

This is a PX-622Q. A PX-627Q or a PX-635Q will have a heat sink on the back.

## OBSOLETE PARTS AND PARTS THAT REPLACE THEM

part#	Description:	Ea.:	Part # It Replaced/ Info:	Better Replacement:
PX-1056	Rotor bushing, PX-2	1		Use PX-1055 rotor
PX-1062	Rear needle brg., PX-2	1	Obsolete part as of 2/98	Use PX-2536 hsg. upgrade kit
PX-1079	Fan spacer, PX-3	1	combined with PX-1078 fan in 2000.	Order PX-1078 fan. No spacer req.
PX-1170	Rear bearing retainer, PX-2	1	Obsolete part as of 7/99	Use PX-2536 hsg. upgrade kit
PX-1247	Bearing retainer spacers, PX-2	3	Obsolete part as of 7/99	Use PX-2536 hsg. upgrade kit
PX-1296	Bearing retainer cap,	1	Obsolete part as of 7/99	Use PX-2536 hsg. upgrade kit
PX-1298	Long rotor bushing	1	Obsolete part as of 2/98	Use PX-1055 rotor
PX-1311	Bearing retainer cap spacer, PX-2	1	Obsolete part as of 7/99	Use PX-2536 hsg. upgrade kit
PX-1341	PX-5S rear brkt. to case spacers	2	5S case redesigned; not needed	Use PX-1339, PX-1341, 2: PX-1340.
PX-2505	Flat negative heat sink assembly	1	799-up: PX-2505 is finned	Finned heat sink part # PX-2505
PX-2504	Flat positive heat sink assembly	1	799-up: PX-2504 is finned	Finned heat sink part # PX-2504
<p>About June of 1998 PennTex cast new finned heat sink housings to further dissipate heat. The same part number is used for both the flat and finned designs. The flat design is no longer available and if you order these part numbers you will receive the finned design. The finned design heat sinks use a stator that does not have an "L" in the part #. The "L" stands for "Long" as the flat heat sinks need a longer stator connection to reach the shorter flat heat sinks. Stator part numbers with an "L" on the end will not work with later finned heat sinks and must be replaced.</p>				
<b>PX-2519</b>	<b>PX-2 bearing upgrade kit*</b>		Not for use with PX-1124 hsg.	PX-2536 Rear hsg. upgrade kit
PX-1074	Front bearing	1	PX-1052 (narrow front bearing)	
PX-1025	PX-2 rear bearing	1	PX-1062 ( rear needle brg.)	PX-2536 Rear hsg. upgrade kit
PX-1310	wave spring spacer	1	PX-1249	
PX-1296	PX-2 rear bearing retainer cap	1	Obsolete part as of 7/99	
PX-1298	long rotor bushing	1	Obsolete part as of 7/99	Use PX-1055 rotor
PX-1100	#10 lock washer	3	good part #, still used.	
PX-1305	Frnt. bearing retainer screw	3	good part #, still used.	
PX-1312	Front bearing z-clips	3	good part #, still used.	
<p>* The PX-2519 kit used parts that are now obsolete and unavailable. Use the PX-2536 upgrade kit for rear housing. Note: the PX-2536 rear housing upgrade kit does not include heat sink assemblies.</p>				
<b>PX-2523</b>	<b>PX-5 bearing upgrade kit**</b>		Not for use with PX-1292 hsg.	PX-5508 rear hsg. upgrade kit
PX-1074	Front bearing	1	PX-1304	
PX-1290	PX-5 rear bearing	1	PX-1025	
PX-1310	wave spring spacer	1	PX-1249	
PX-1290	PX-5 rear bearing retainer cap	1	Obsolete part as of 7/99	
PX-1298	long rotor bushing	1	Obsolete part as of 2/98	
PX-1100	#10 lock washer	3	good part #, still used.	
PX-1305	Frnt. bearing retainer screw	3	good part #, still used.	
PX-1312	Front bearing z-clips	3	good part #, still used.	
<p>** The PX-2523 kit used parts that are now obsolete and unavailable. Use the PX-5508 upgrade kit for rear housing. Note: the PX-5508 rear housing upgrade kit does not include heat sink assemblies.</p>				
<b>PX-6510 PX-3 Battery Post Upgrade</b>				
PX-1118	PX-3 5/16" battery post	1	Replaced by PX-1376 02/15/00	Use PX-6510 3/8" battery post kit
PX-1071	5/16" Red fiber insulator washer	1	Replaced by PX-1385 02/15/00	
PX-1205	5/16" Bat. post ins. sleeve	1	Replaced by PX-1405 02/15/00	
PX-1105	5/16" flange nut	1	Replaced by PX-1381 02/15/00	
<p>NOTE: All above parts were replaced by larger 3/8" parts. Left and right sides of PX-3 from S#20019082-up now use the same parts. Some holes may have to be enlarged to make the 3/8" parts fit.</p>				
<b>PX-2526</b>	<b>PX-2526 Heat sink upgrade kit</b>		3 metal straps used with finned heat sinks only	
PX-1350	large metal strap	1	PX-2509- Wire strap, large	same part, new part number
PX-1351	medium metal strap	1	PX-2510- Wire strap, medium	same part, new part number
PX-1352	small metal strap	1	PX-2511- wire strap, small	same part, new part number
<p>Wire connections between the heat sinks were replaced by metal straps around June of 1998.</p>				